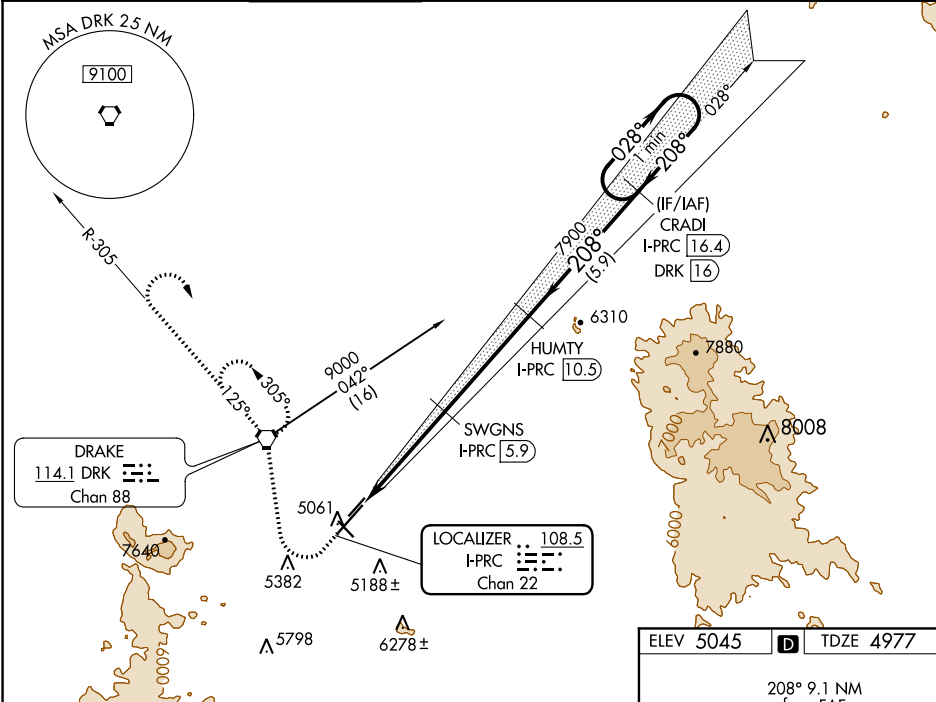




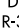
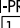



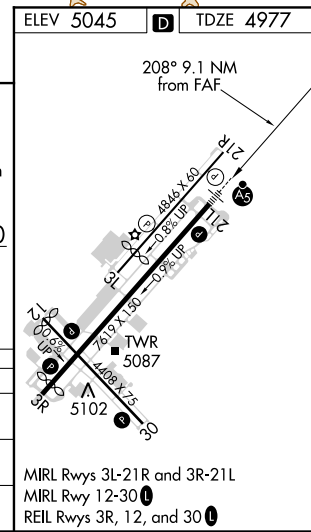
LOC/DME I-PRC	APP CRS	Rwy Idg
108.5	208°	7619
Chan 22		TDZE 4977
		Apt Elev 5045

ILS or LOC/DME Rwy 21L
PRESOTT RGNL - ERNEST A LOVE FIELD (PRC)

ATIS 127.2		PHOENIX APP CON 133.575 281.55		PRESOTT TOWER ★ 125.3 (CTAF) 257.9		GND CON 121.7	CLNC DEL 119.25	128.75 0 (12-30) 125.3 (CTAF) 0 (3R-21L)	UNICOM 122.95
-----------------------------	--	---	--	---	--	--------------------------------	----------------------------------	---	--------------------------------



5400				9000			VGSi and ILS glidepath not coincident (VGSi Angle 3.00/TCH 55).	
Use I-PRC DME when on the localizer course. *LOC only							CRADI I-PRC 16.4	One Minute Holding Pattern
		I-PRC 1.4	*I-PRC 2.6	SWGNS I-PRC 5.9	HUMTY I-PRC 10.5	7900	208°	028° → 9000 ← 208°
1.2		3.3 NM		4.6 NM		5.9 NM		GS 3.00° TCH 55
CATEGORY	A		B		C		D	
S-ILS 21L	5177-½		200 (200-½)					
S-LOC 21L	5380-½		403 (400-½)		5380-¾		403 (400-¾)	
 CIRCLING	5540-1		5760-1		6080-3		6680-3	
	495 (500-1)		715 (800-1)		1035 (1100-3)		1635 (1700-3)	



SW-4, 31 DEC 2020 to 28 JAN 2021

SW-4, 31 DEC 2020 to 28 JAN 2021