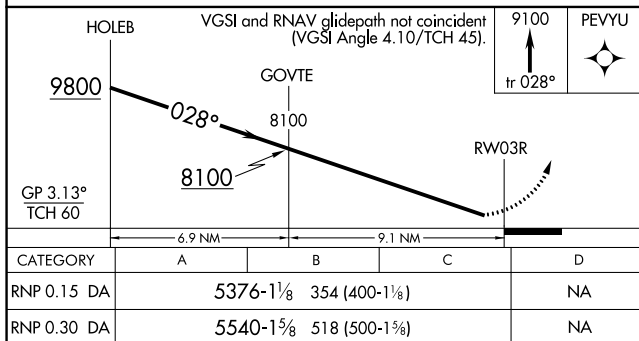
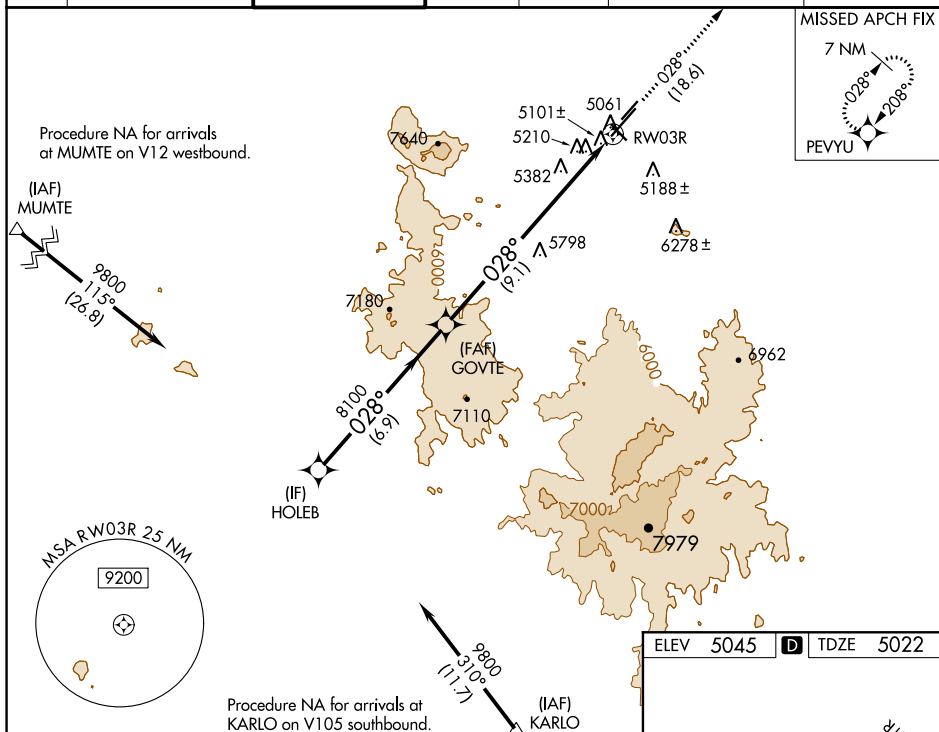


RNAV (RNP) Z RWY 3R
PRESCOTT RGNL - ERNEST A LOVE FIELD (PRC)

T For uncompensated Baro-VNAV systems, procedure NA below -11°C or above 54°C.

MISSED APPROACH: Climb to 9100
on track 028° direct PEVYU and hold.

ATIS	PHOENIX APP CON	PRESCOTT TOWER ★	GND CON	CLNC DEL	128.750 (12-30)	UNICOM
127.2	133.575 281.55	125.3 (CTAF) 257.9	121.7	119.25	125.3 (CTAF) 0 (3R-21L)	122.95



AUTHORIZATION REQUIRED

