
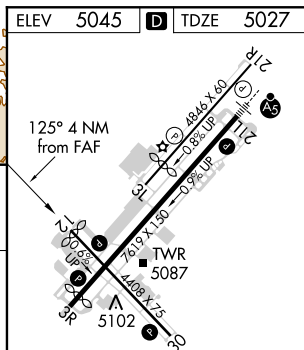
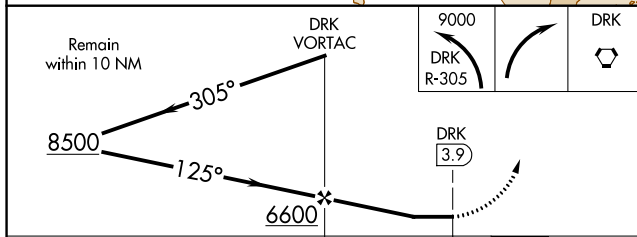
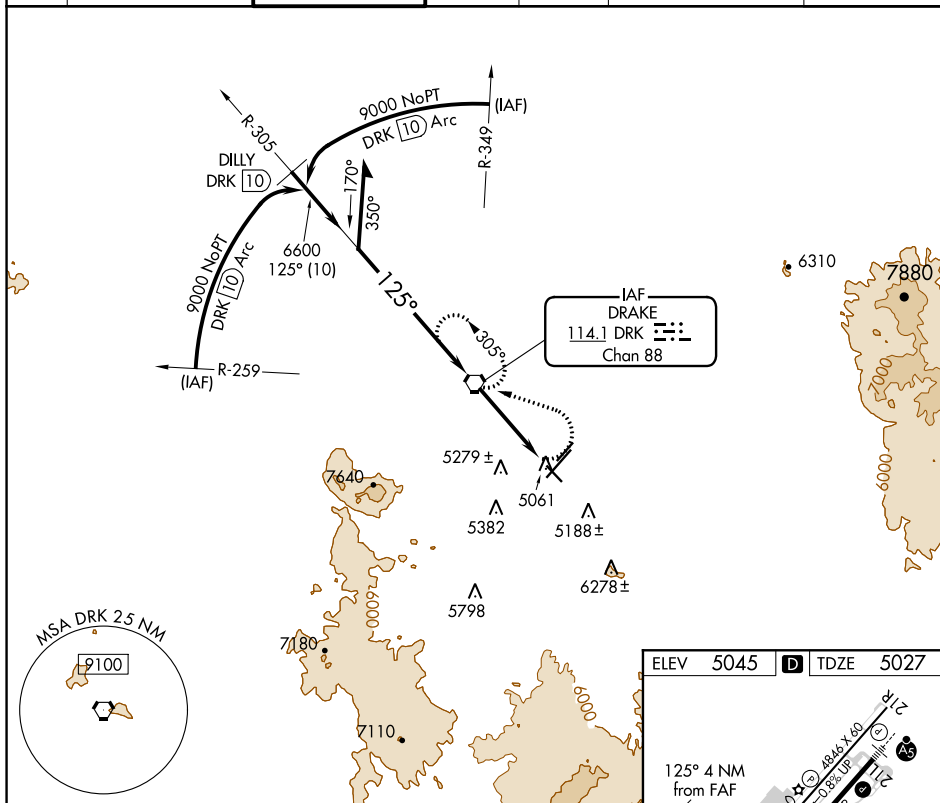


VOR RWY 12  
PRESCOTT RGNL - ERNEST A LOVE FIELD (PRC)

- |  |  |
|--|--|
| <p>  </p> <p>           Straight-in Rwy 12 NA at night, Circling Rwy 3L, 12, 30 NA at night.<br/>           Rwy 12 helicopter visibility reduction below 1 SM NA. Circling NA for Cat D southeast of Rwy 3R-21L.         </p> | <p>           MISSED APPROACH: Climbing left turn to 9000 via DRK VORTAC and DRK R-305, then turn right direct DRK VORTAC and hold.         </p> |
|--|--|

ATIS <b>127.2</b>	PHOENIX APP CON <b>133.575 281.55</b>	PRESCOTT TOWER ★ <b>125.3 (CTAF) 257.9</b>	GND CON <b>121.7</b>	CLNC DEL <b>119.25</b>	<b>128.75 0 (12-30)</b> <b>125.3 (CTAF) 0 (3R-21L)</b>	UNICOM <b>122.95</b>
----------------------	--	---	-------------------------	---------------------------	---	-------------------------



	A	B	C	D	MIRL Rwy's 3L-21R and 3R-21L REIL Rwy's 3R, 12, and 30
S-12	5540-1	513 (500-1)	5540-1½ 513 (500-1½)	5540-1¾ 513 (500-1¾)	FAF to MAP 3.9 NM
CIRCLING	5540-1 495 (500-1)	5760-1 715 (800-1)	6080-3	1035 (1100-3)	Knots    60    90    120    150    180 Min:Sec    3:54    2:36    1:57    1:34    1:18