

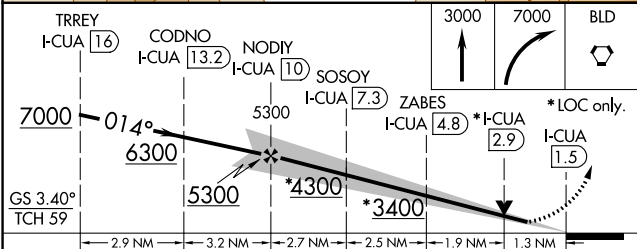
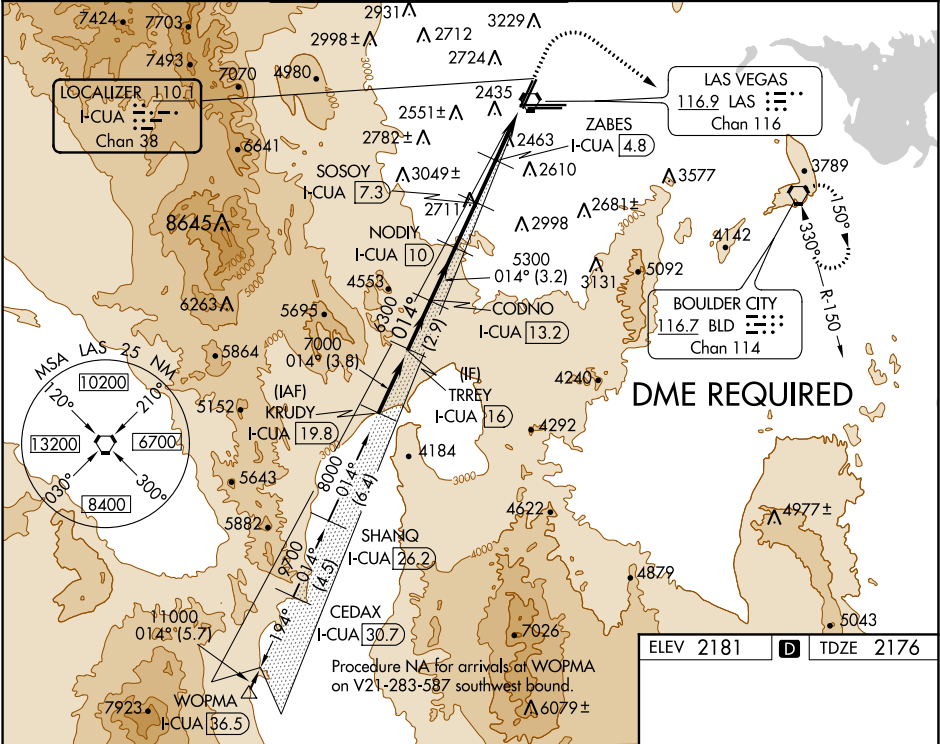


LOC/DME I-CUA <b>110.1</b> Chan <b>38</b>	APP CRS <b>014°</b>	Rwy Idg TDZE Apt Elev	<b>8401</b> <b>2176</b> <b>2181</b>
---	------------------------	-----------------------------	---

ILS or LOC RWY 1L  
MC CARRAN INTL (LAS)

 Rwy 1L helicopter visibility reduction below 3/4 SM NA. DME required. For inop ALS, increase S-ILS 1L all Cats visibility to 7/8 SM.	 MISSED APPROACH: Climb to 3000 then climbing right turn to 7000 direct BLD VORTAC and hold, continue climb-in-hold to 7000.
--	---

D-ATIS <b>132.4</b>	LAS VEGAS APP CON <b>125.025 379.15</b> (West) <b>125.6 282.2</b> (East)	LAS VEGAS TOWER <b>118.75 257.8</b> (Rwy 1L/19R, 1R/19L) <b>119.9 257.8</b> (Rwy 8L/26R, 8R/26L)	GND CON <b>121.1 270.8</b> E of 1R/19L <b>121.9 254.3</b> W of 1R/19L	CLNC DEL <b>118.0</b>	CPDLC
------------------------	--	--	---	--------------------------	-------



CATEGORY	A	B	C	D
S-ILS 1L	2460-3/4	284 (300-3/4)		NA
S-LOC 1L	2720-3/4	544 (600-3/4)	2720-1 3/8 544 (600-1 3/8)	NA
CIRCLING	3020-1 1/4 839 (900-1 1/4)	3040-1 1/4 859 (900-1 1/4)	3100-2 3/4 919 (1000-2 3/4)	NA

ELEV 2181	TDZE 2176
-----------	-----------

