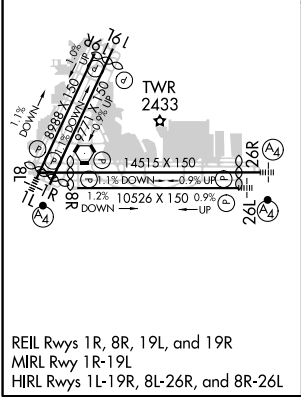
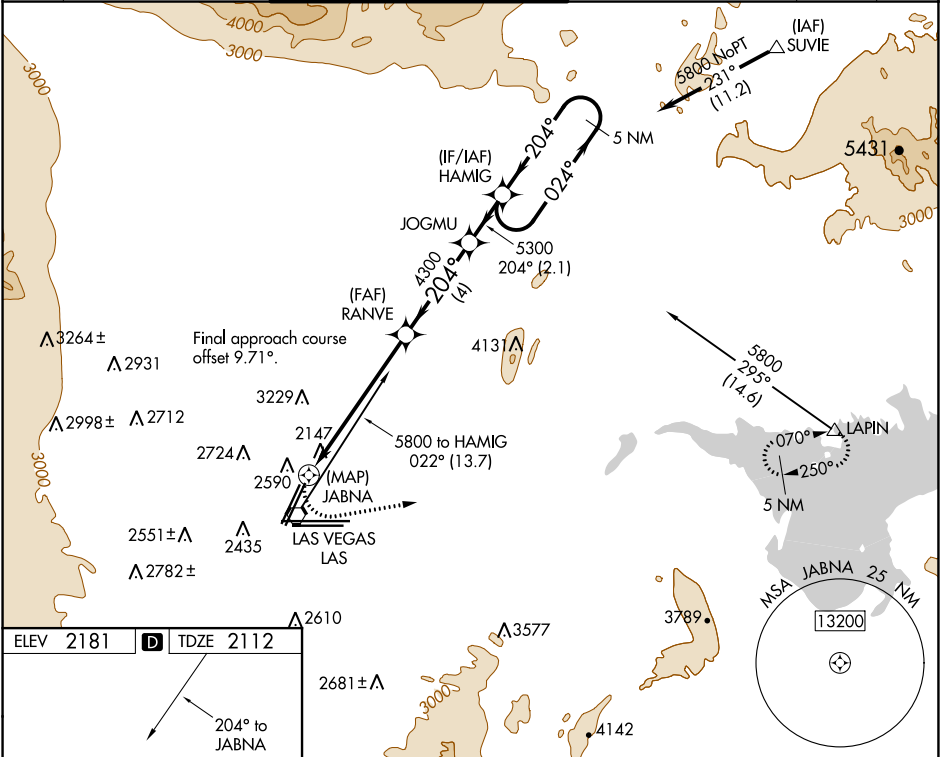


WAAS CH 45542 W19A	APP CRS 204°	Rwy Idg TDZE Apt Elev	8803 2112 2181
--	------------------------	-----------------------------	---

RNAV (GPS) RWY 19L
MC CARRAN INTL (LAS)

DME/DME RNP-0.3 NA.		MISSED APPROACH: Climbing left turn to 6000 direct LAPIN and hold.		
D-ATIS 132.4	LAS VEGAS APP CON 125.025 379.15 (West) 125.6 282.2 (East)	LAS VEGAS TOWER 118.75 257.8 (Rwy 1L/19R, 1R/19L) 119.9 257.8 (Rwy 8L/26R, 8R/26L)	GND CON 121.1 270.8 E of 1R/19L 121.9 254.3 W of 1R/19L	CLNC DEL 118.0
		CPDLC		



ELEV 2181 TDZE 2112		204° to JABNA	
6000 LAPIN		VGSI and descent angles not coincident (VGSI Angle 3.00/TCH 75).	
JABNA		Holding Pattern	
1 NM to JABNA		5 NM	
JABNA		5300	
3.08° TCH 60		024°	
4300		5800	
0.5 1 NM 5.1 NM 4 NM 2.1 NM			
CATEGORY	A	B	C
LP MDA	2640-1	528 (500-1)	2640-1½ 528 (500-1½)
LNAV MDA	2760-1	648 (600-1)	2760-1⅞ 648 (600-1⅞)
CIRCLING	3020-1¼ 839 (900-1¼)	3040-1¼ 859 (900-1¼)	3100-2¾ 919 (1000-2¾) 3540-3 1359 (1400-3)