

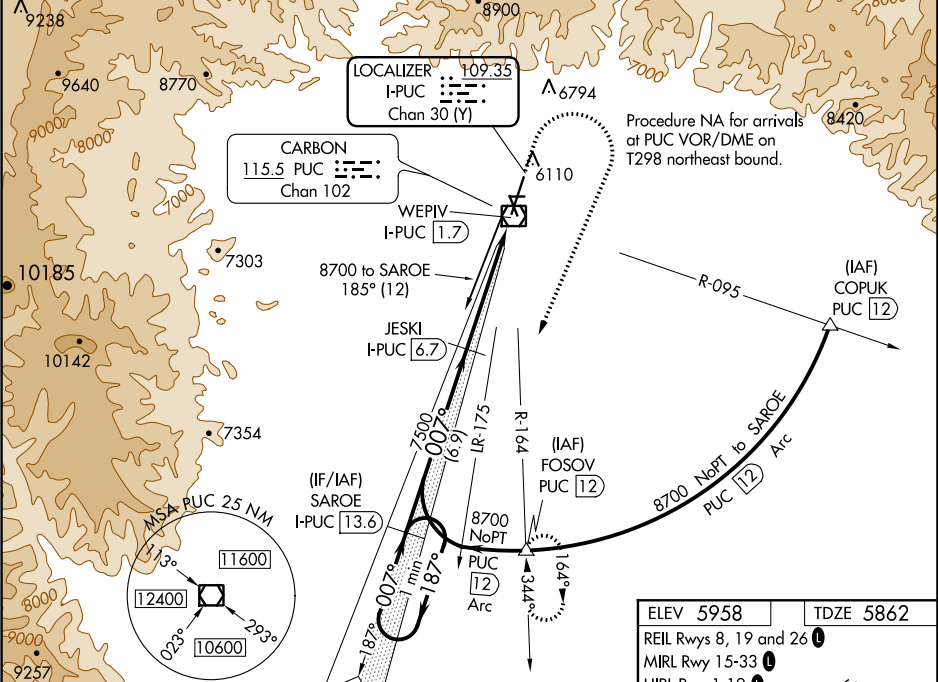
LOC/DME I-PUC 109.35 Chan 30 (Y)	APP CRS 007°	Rwy Idg TDZE Apt Elev	8316 5862 5958
--	------------------------	-----------------------------	---

ILS or LOC RWY 1

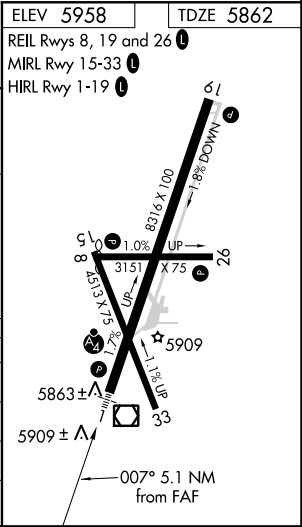
CARBON COUNTY RGNL/BUCK DAVIS FIELD (PUC)

DME required for procedure entry. DME required.	MALSF	MISSED APPROACH: Climb to 6300 then climbing right turn to 10000 on heading 200° and on PUC VOR/DME R-164 to FOSOV/PUC 12 DME and hold, continue climb-in-hold to 10000. #Missed approach requires minimum climb of 339 feet per NM to 7100.
NA Circling NA at night. For inoperative ALS, increase S-ILS 1 all Cats visibility to ¾ SM. Inoperative table does not apply to S-ILS 1# all Cats.		

ASOS 135.425	SALT LAKE CENTER 133.9 370.85	UNICOM 122.8 (CTAF) 0
------------------------	---	---------------------------------



Use I-PUC DME when on the localizer course.				
One Minute Holding Pattern				
SAROE I-PUC 13.6				
JESKI I-PUC 6.7				
WEPIV I-PUC 1.7				
GS 3.00° TCH 54				
6.9 NM 4 NM 1 NM 0.2				
CATEGORY	A	B	C	D
S-ILS 1#		6062-¾	200 (200-¾)	
S-ILS 1		6127-¾	265 (200-¾)	
S-LOC 1		6240-¾	378 (300-¾)	
CIRCLING	6660-1 702 (800-1)	6860-1¼ 902 (1000-1¼)	7120-3 1162 (1200-3)	NA



SW-4, 31 DEC 2020 to 28 JAN 2021

SW-4, 31 DEC 2020 to 28 JAN 2021