

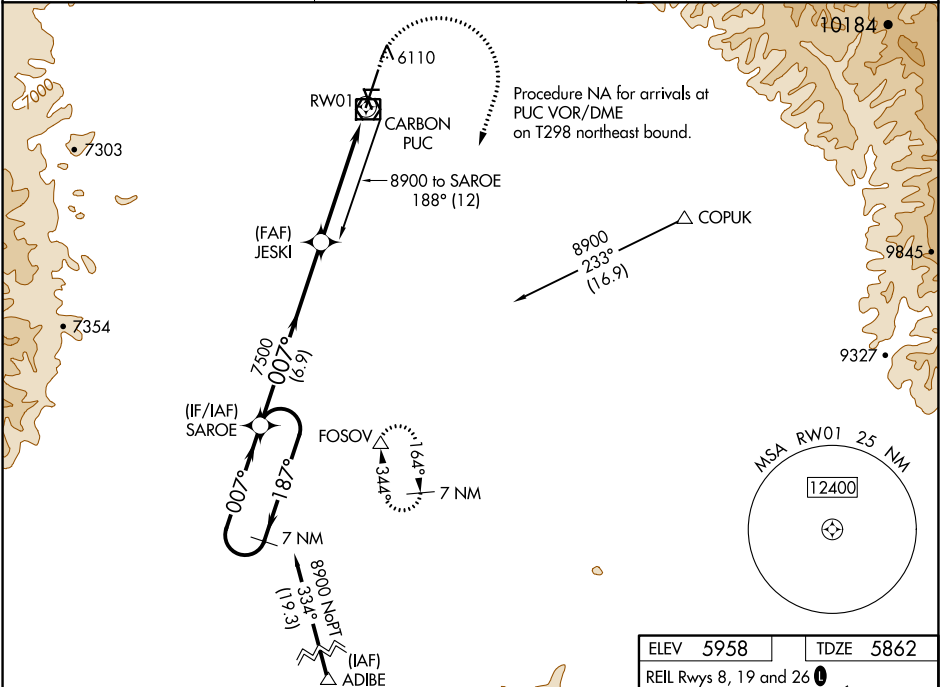
WAAS CH 78037 W01A	APP CRS 007°	Rwy Idg TDZE 5862 Apt Elev 5958	8316
--	------------------------	---	-------------

RNAV (GPS) RWY 1

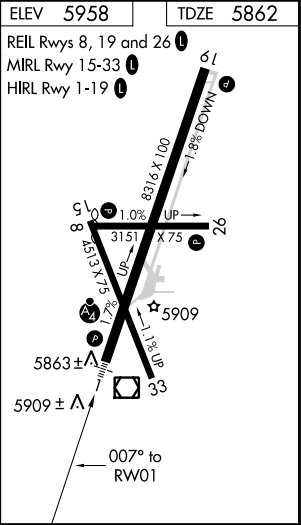
CARBON COUNTY RGNL/BUCK DAVIS FIELD (PUC)

RNP APCH.	MALSF	MISSED APPROACH: Climb to 6300 then climbing right turn to 10000 direct FOSOV and hold, continue climb-in-hold to 10000. #Missed approach requires minimum climb of 296 feet per NM to 7500.
<div><div></div><div>Circling NA at night. For inoperative</div><div></div><div>ALS increase LP Cat C/D visibility to 1½ SM.</div></div>	<div><div></div><div></div></div>	

ASOS 135.425	SALT LAKE CENTER 133.9 370.85	UNICOM 122.8 (CTAF) 0
------------------------	---	---------------------------------



7 NM Holding Pattern	SAROE	JESKI	6300	10000	FOSOV
8900	187°	007°	007°	7500	1.2 NM to RWY 1
6.9 NM	3.9 NM	1.2			
CATEGORY	A	B	C	D	
LP MDA #	6260-¾	398 (400-¾)	6260-7/8	398 (400-7/8)	
LNAV MDA #	6260-¾	398 (400-¾)	6260-7/8	398 (400-7/8)	
LP MDA	6320-¾	458 (400-¾)	6320-1	458 (400-1)	
LNAV MDA	6500-¾	638 (600-¾)	6500-1½	638 (600-1½)	
CIRCLING	6660-1 702 (800-1)	6860-1¼ 902 (1000-1¼)	7120-3 1162 (1200-3)	NA	



RNAV (GPS) RWY 1