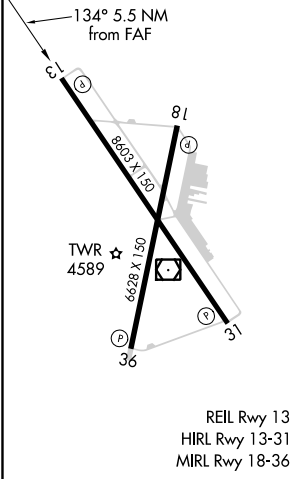
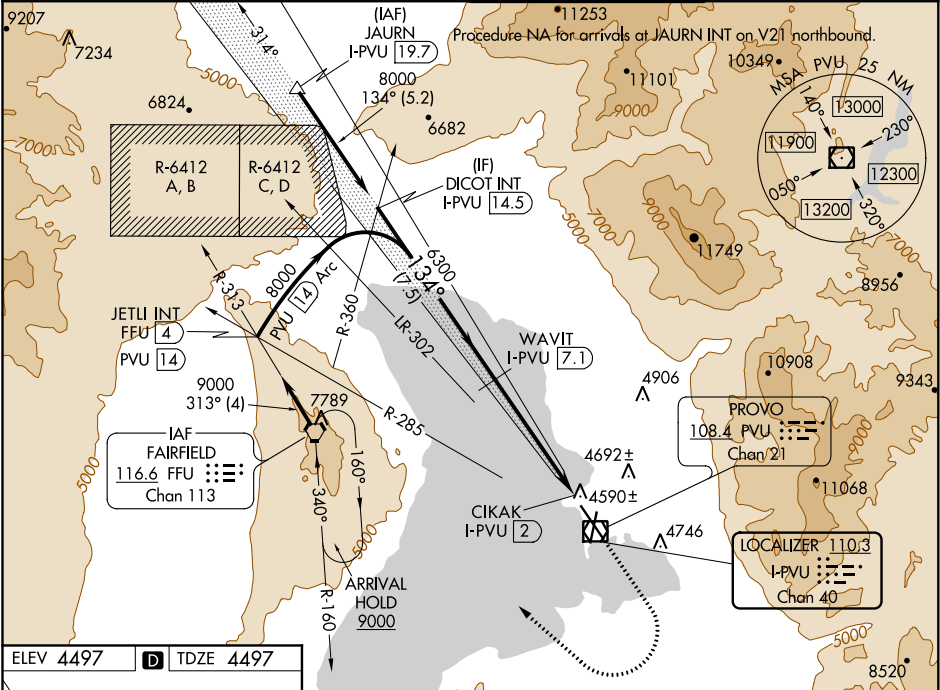


LOC/DME I-PVU <b>110.3</b> Chan <b>40</b>	APP CRS <b>134°</b>	Rwy Idg <b>8599</b> TDZE <b>4497</b> Apt Elev <b>4497</b>
---	------------------------	---

ILS or LOC RWY 13  
PROVO MUNI (PVU)

<p><b>⚠</b> Circling to Rwy 18 NA at night. Circling NA east of Rwy 18 and 36. DME required.</p>	<p>MISSED APPROACH: Climb to 6200 then climbing right turn to 9000 direct FFU VORTAC and hold. # Missed approach requires minimum climb of 300 feet per NM to 8700.</p>
--	---

ATIS ★ <b>135.175</b>	SALT LAKE CITY APP CON <b>118.85 233.7</b>	PROVO TOWER ★ <b>125.3 (CTAF)</b>	GND CON <b>119.4</b>
--------------------------	---	--------------------------------------	-------------------------



VGS and ILS glidepath not coincident.			
6200 9000 FFU			
Use I-PVU DME when on localizer course.			
*LOC only.			
8000 6300 6300 6300			
134°			
GS 3.00° TCH 50			
-7.5 NM -4.6 NM 0.4 NM 0.5 NM			
CATEGORY	A	B	C
S-ILS 13#	4697-3/4	200 (200-3/4)	
S-ILS 13	5077-1 1/2	580 (600-1 1/2)	
S-LOC 13#	4820-1	323 (400-1)	
S-LOC 13	5220-1 723 (800-1)	5220-2 723 (800-2)	
CIRCLING	5220-1 723 (800-1)	5220-2 723 (800-2)	5260-2 1/2 763 (800-2 1/2)