

WAAS CH <b>97307</b> <b>W13A</b>	APP CRS <b>134°</b>	Rwy Idg TDZE Apt Elev	<b>8599</b> <b>4497</b> <b>4497</b>
--	------------------------	-----------------------------	---

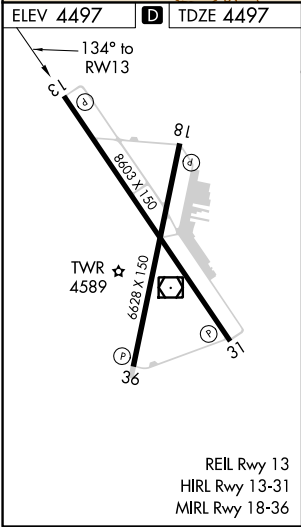
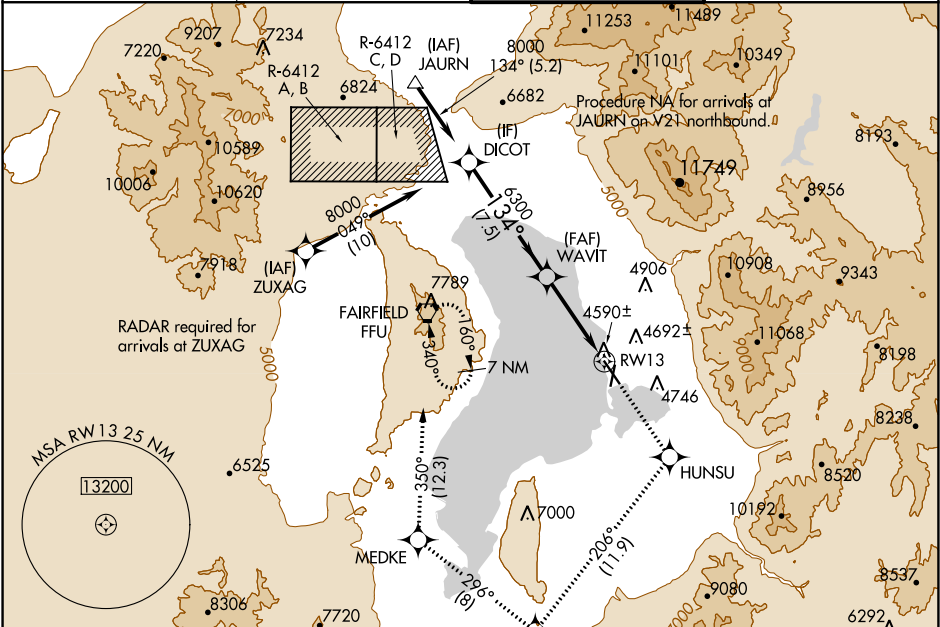
RNAV (GPS) RWY 13

PROVO MUNI (PVU)

**⚠** For uncompensated Baro-VNAV systems, LNAV/VNAV NA below -23°C (-9°F) or above 40°C (104°F).  
DME/DME RNP-0.3 NA.  
Circling NA east of Rwy 18 and 31.

MISSED APPROACH: Climb to 9000 direct HUNSU and on track 206° to SANN0 and right turn on track 296° to MEDKE and on track 350° to FFU VORTAC and hold.

ATIS ★ <b>135.175</b>	SALT LAKE CITY APP CON <b>118.85 233.7</b>	PROVO TOWER ★ <b>125.3 (CTAF)</b>	GND CON <b>119.4</b>
--------------------------	---	--------------------------------------	-------------------------



DICOT		9000		HUNSU		SANNO		MEDKE		FFU	
				tr 206°		tr 296°		tr 350°			

8000

134°

6300

6300

\*1.6 NM to RW13

RW13

\*LNAV only.

GP 3.00°  
TCH 50

7.5 NM

3.9 NM

1.6 NM

CATEGORY	A	B	C	D
LPV DA	4697- <sup>3</sup> / <sub>4</sub> 200 (200- <sup>3</sup> / <sub>4</sub> )			
LNAV/ VNAV DA	4940-1 <sup>1</sup> / <sub>2</sub> 443 (500-1 <sup>1</sup> / <sub>2</sub> )			
LNAV MDA	5040-1 543 (600-1)	5040-1 <sup>1</sup> / <sub>2</sub> 543 (600-1 <sup>1</sup> / <sub>2</sub> )		
CIRCLING	5040-1 543 (600-1)	5040-1 <sup>1</sup> / <sub>2</sub> 543 (600-1 <sup>1</sup> / <sub>2</sub> )		5060-2 563 (600-2)

SW-4, 31 DEC 2020 to 28 JAN 2021

SW-4, 31 DEC 2020 to 28 JAN 2021