

WAAS CH <b>90241</b> <b>W35A</b>	APP CRS <b>349°</b>	Rwy Idg <b>7000</b> TDZE <b>5274</b> Apt Elev <b>5280</b>
--	------------------------	---

RNAV (GPS) Z RWY 35  
VERNAL RGNL (VEL)

**Baro-VNAV NA** when using Roosevelt altimeter setting. For uncompensated Baro-VNAV systems, LNAP/VNAV NA below -22°C (-7°F) or above 35°C (96°F). DME/DME RNP-0.3 NA. Rwy 35 helicopter visibility reduction below 3% SM NA. When local altimeter setting not received, use Roosevelt altimeter setting and increase all DA 76 feet, increase \*LPV all Cats visibility to 1½ SM, increase LNAP/VNAV all Cats visibility to 3 SM, and \*LNAP/VNAV all Cats visibility to 1½ SM.

**MISSED APPROACH:** Climb to 7000 then climbing right turn to 10000 direct OHAPE and hold.  
\* Missed approach requires minimum climb of 290 feet per NM to 8600

ASOS <b>135.175</b>	SALT LAKE CENTER <b>119.95 377.15</b>	UNICOM <b>122.7 (CTAF) 0</b>
------------------------	--	---------------------------------

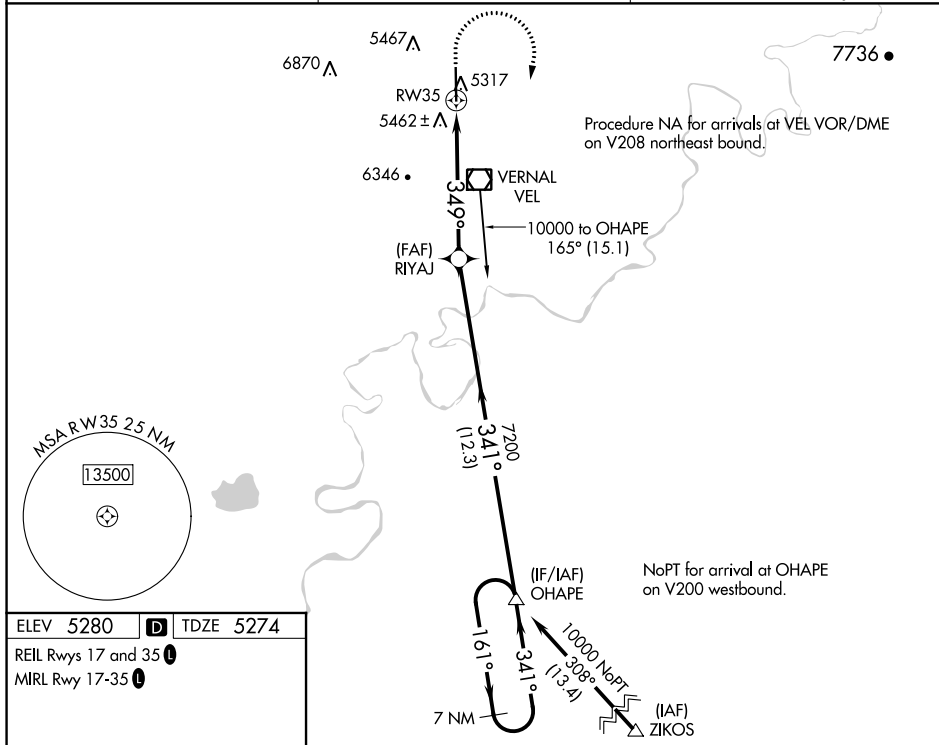


Figure 1: Example of a 7 NM Holding Pattern. The diagram illustrates a vertical approach path with a 349° heading to RW35. A 7 NM holding pattern is established at 7200 feet. The pattern consists of a 10000 ft outbound leg at 161° and a 7200 ft inbound leg at 341°. The holding pattern is defined by a 7 NM radius. The diagram also shows the VGSi and RNAV glidepaths, which are not coincident, with a VGSi angle of 3.00° and a TCH of 48 ft. The holding pattern is labeled "7 NM Holding Pattern" and "GP 3.10° TCH 60".