

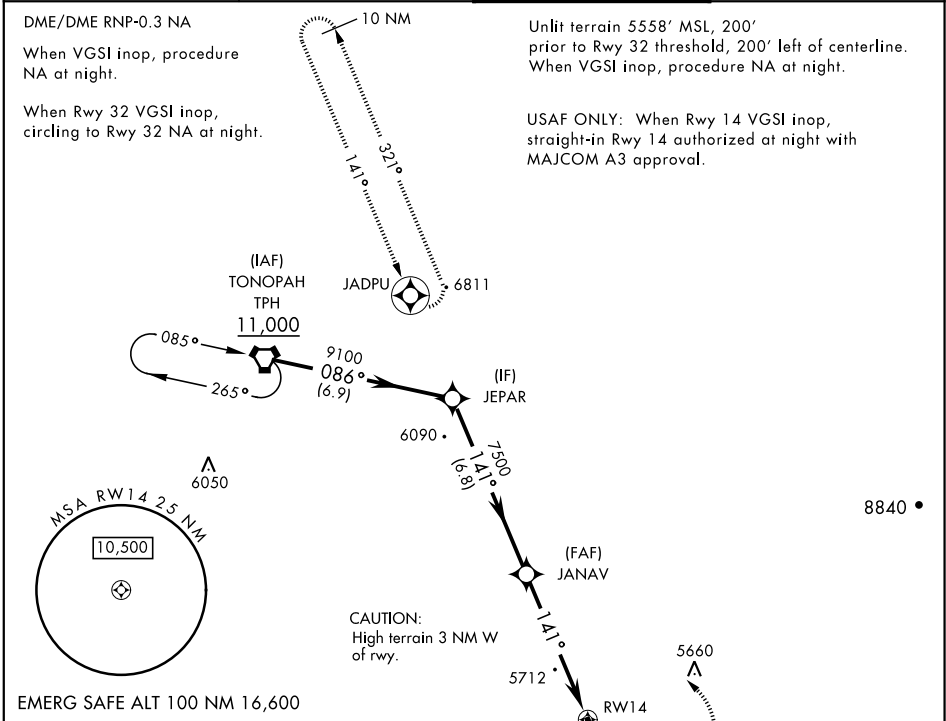
TONOPAH, NEVADA

RNAV (GPS) RWY 14

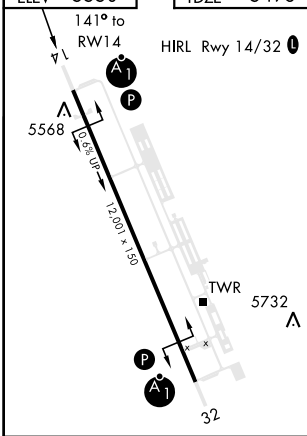
APCH CRS 141°	Rwy ldg 12,001 TDZE 5496 Arpt Elev 5550	AL-3188 [USAF]	TONOPAH TEST RANGE (KTNX)
-------------------------	--	----------------	---------------------------

▼ * When ALS inop, increase CAT AB RVR to 55, vis to 1 mile, CAT CD vis to 1 3/8 miles. ** Circling not authorized West of Rwy 14/32.	ALSIF-1 	MISSED APPROACH: Turn left climbing to 11,000 direct JADPU and hold, continue climb-in-hold to 11,000.
---	-------------	--

AWOS 113.0	NELLIS CONTROL 119.35 254.4	SILVERBOW TOWER ★ 124.75 257.95 0	GND CON 127.25 335.5
----------------------	---------------------------------------	---	--------------------------------



EMERG SAFE ALT 100 NM 16,600



VGSI and descent angles not coincident				11,000	JADPU
CATEGORY	A	B	C	D	
RNAV MDA *	5960/24 464 (500-1/2)	5960/50 464 (500-1)			
CIRCLING **	6040-1 490 (500-1)	6040-1 1/2 490 (500-1 1/2)	6100-2 550 (600-2)		

TONOPAH, NEVADA
Amdt 4 29MAR18

37°47'N-116°47'W

TONOPAH TEST RANGE (KTNX)

RNAV (GPS) RWY 14

SW-4, 31 DEC 2020 to 28 JAN 2021

SW-4, 31 DEC 2020 to 28 JAN 2021