

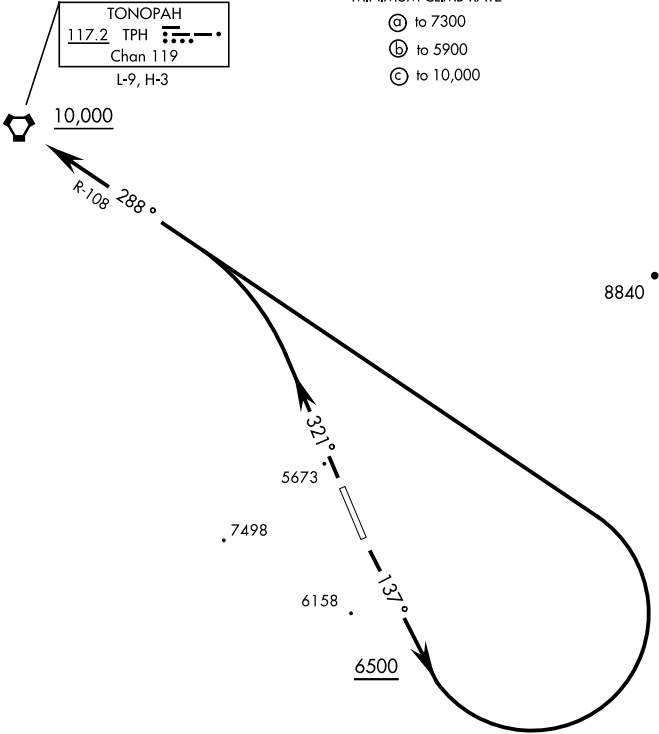


GND CON  
127.25 335.5  
SILVERBOW TOWER ★  
124.75 257.95  
NELLIS CONTROL  
119.35 254.4

Rwy	Knots	60	120	180	240	300	360
14 ⓐ	V/V(fpm)	220	440	660	880	1100	1320
32 ⓑ	V/V(fpm)	260	520	780	1040	1300	1560
32 ⓒ	V/V(fpm)	261	522	783	1044	1305	1566

MINIMUM CLIMB RATE

- ⓐ to 7300
- ⓑ to 5900
- ⓒ to 10,000



DEPARTURE ROUTE DESCRIPTION

TAKE-OFF RWY 14: Climb heading 137°, when leaving 6500 turn left direct TPH VORTAC. Cross TPH at or above 10,000.

TAKE-OFF RWY 32: Climb heading 321° to intercept TPH VORTAC R-108 direct TPH. Cross TPH at or above 10,000.

