



18200

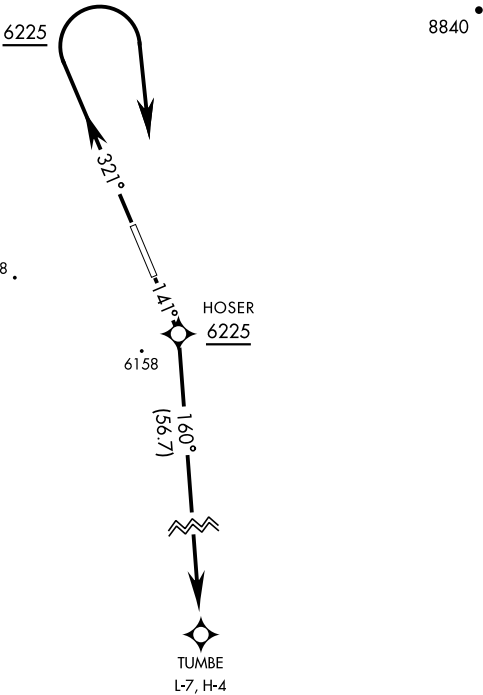
TUMBE ONE (RNAV) DEPARTURE (TUMBE1 • TUMBE)

TONOPAH TEST RANGE (KTNX)

| | | | | | | | | | | | |
|-------------------|--|-----------------|--|-----|------------|-----|-----|-----|------|------|------|
| GND CON | | SHL-3188 [USAF] | | Rwy | Knots | 60 | 120 | 180 | 240 | 300 | 360 |
| 127.25 335.5 | | | | 14 | ⓐ V/V(fpm) | 300 | 600 | 900 | 1200 | 1500 | 1800 |
| SILVERBOW TOWER ★ | | | | 32 | ⓑ V/V(fpm) | 265 | 530 | 795 | 1060 | 1325 | 1590 |
| 124.75 257.95 | | | | | | | | | | | |
| NELLIS CONTROL | | | | | | | | | | | |
| 119.35 254.4 | | | | | | | | | | | |

Minimum Climb Rate

- ⓐ to 10,700
- ⓑ to 5900



GPS REQUIRED

For use by E/F/G and R (RNP 2.0)
equipped A/C only.

▼

DEPARTURE ROUTE DESCRIPTION

TAKE-OFF RWY 14: Fly heading 141°, at 6225 (HOSER) turn right direct TUMBE.

TAKE-OFF RWY 32: Fly heading 321°, at 6225 turn right direct TUMBE.



SW-4, 31 DEC 2020 to 28 JAN 2021

SW-4, 31 DEC 2020 to 28 JAN 2021