

VOR/DME or TACAN RWY 14

VORTAC TQQ 113.0 Chan 77	APCH CRS 145°	Rwy ldg 12,001 THRE 5473 Arpt Elev 5550
--	-------------------------	--

AL-3188 [USAF]

TONOPAH TEST RANGE (KTNX)

▼ * When ALS inop, increase CAT AB vis to 1 mile,
CAT CDE vis to 1 3/8 miles.
** Circling not authorized West of Rwy 32.

ALSF-1



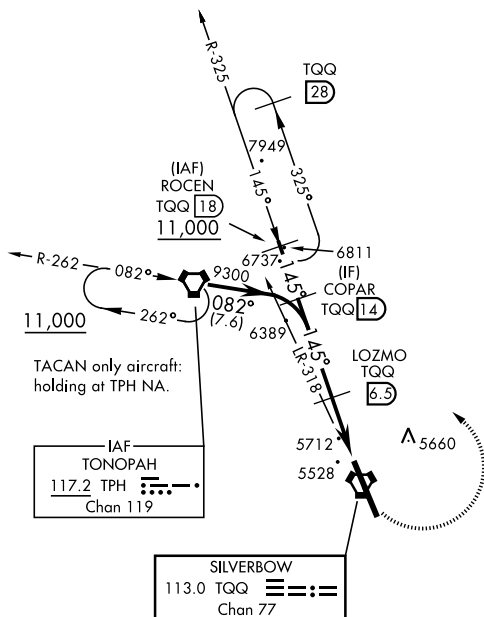
MISSED APPROACH: Turn left climbing to 11,000
via TQQ R-325 to ROCEN and hold, continue
climb-in-hold to 11,000.

AWOS 113.0	NELLIS CONTROL 119.35 254.4	SILVERBOW TOWER 124.75 257.95 0	GND CON 127.25 335.5
----------------------	---------------------------------------	---	--------------------------------

CAUTION: High terrain 3 NM W of Rwy.
Unlit terrain 5558' MSL, 200' prior to Rwy
32 threshold, 200' left of centerline.

When VGSI inop, procedure NA at night.
USAF ONLY: When Rwy 14 VGSI inop,
straight-in Rwy 14 authorized at night with
MAJCOM A3 approval.

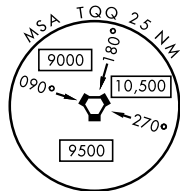
CAUTION: When Rwy 32 VGSI inop,
circling to Rwy 32 NA at night.



TACAN only aircraft:
holding at TPH NA.

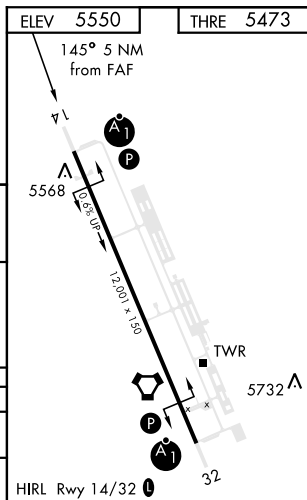
IAF
TONOPAH
117.2 TPH
Chan 119

SILVERBOW
113.0 TQQ
Chan 77



EMERG SAFE ALT 100 NM 16,600

<p>COPAR TQQ 14 9300</p> <p>LOZMO 6.5</p> <p>3.0 HUGER</p> <p>2 VORTAC</p> <p>11,000 ROCEN TQQ R-325 18</p> <p>2.77° TCH 51</p> <p>7000</p> <p>4.5 NM</p> <p>.5</p>					
CATEGORY	A	B	C	D	E
S-14 *	5980-1/2 507 (500-1/2)		5980-1 507 (500-1)		
CIRCLING**	6040-1 490 (500-1)		6040-1 1/2 490 (500-1/2)		6100-2 550 (600-2)



VOR/DME or TACAN RWY 14