

TACAN RWY 12

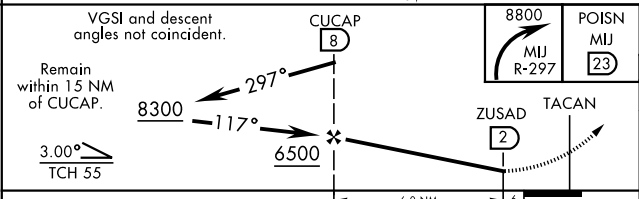
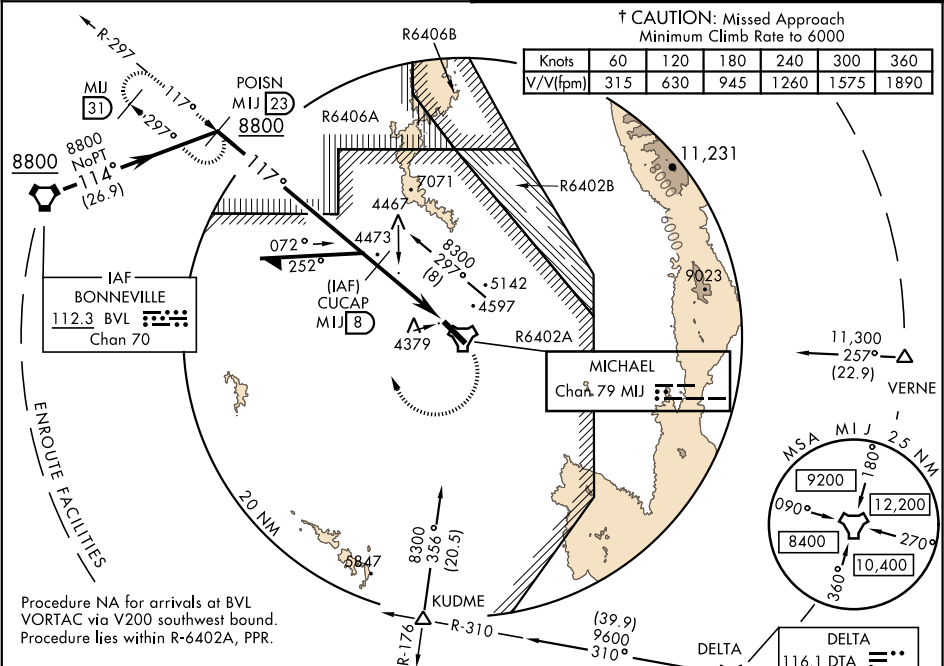
TACAN Chan	MIJ 79	APCH CRS 117°	Rwy ldg 10,000 TDZE 4346 Arprt Elev 4351
------------	--------	---------------	--

AL-5071 [USA]

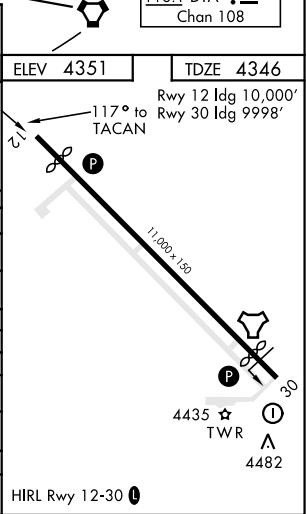
MICHAEL AAF (KDPG)

<p>✚ NA</p> <p>* Obtain local altimeter setting on CTAF; when not received, use Wendover altimeter setting.</p>	<p>MISSED APPROACH: Climbing right turn to 8800 via MIJ TACAN R-297 to POISN/MIJ 23 DME and hold.</p>
---	---

<p>CLOVER CON</p> <p>134.1 363.5</p>	<p>CTAF</p> <p>0 126.2 270.3</p>
--------------------------------------	----------------------------------



CATEGORY	A	B	C	D	E
S-12	4800-1 454 (500-1)		4800-1 454 (500-1 3/8)	5200-2 1/2 854 (900-2 1/2)	
CIRCLING	4800-1 449 (500-1)	4920-1 569 (600-1)	5160-2 1/4 809 (900-2 1/4)	5880-3 1529 (1600-3)	6200-3 1849 (1900-3)
† BELOW MINIMA REQUIRES MISSED APPROACH CLIMB GRADIENT of 31.5 ft/NM					
S-12	NA		4800-1 3/8 454 (500-1 3/8)		
* WENDOVER ALTIMETER SETTING MINIMUMS					
S-12	4960-1 614 (700-1)		4960-1 3/4 614 (700-1 3/4)	5360-3 1014 (1100-3)	
CIRCLING	4960-1 609 (700-1)	5080-1 729 (800-1)	5320-3 969 (1000-3)	6040-3 1689 (1700-3)	6360-3 2009 (2100-3)
† BELOW MINIMA REQUIRES MISSED APPROACH CLIMB GRADIENT of 31.5 ft/NM					
S-12	NA		4960-1 3/4 614 (700-1 3/4)	4960-3 614 (700-3)	



TACAN RWY 12

SW-4, 31 DEC 2020 to 28 JAN 2021

SW-4, 31 DEC 2020 to 28 JAN 2021