

WAAS
CH **69204**
W33A

APP CRS
336°

Rwy Idg **5950**
TDZE **4316**
Apt Elev **4316**

RNAV (GPS) RWY 33

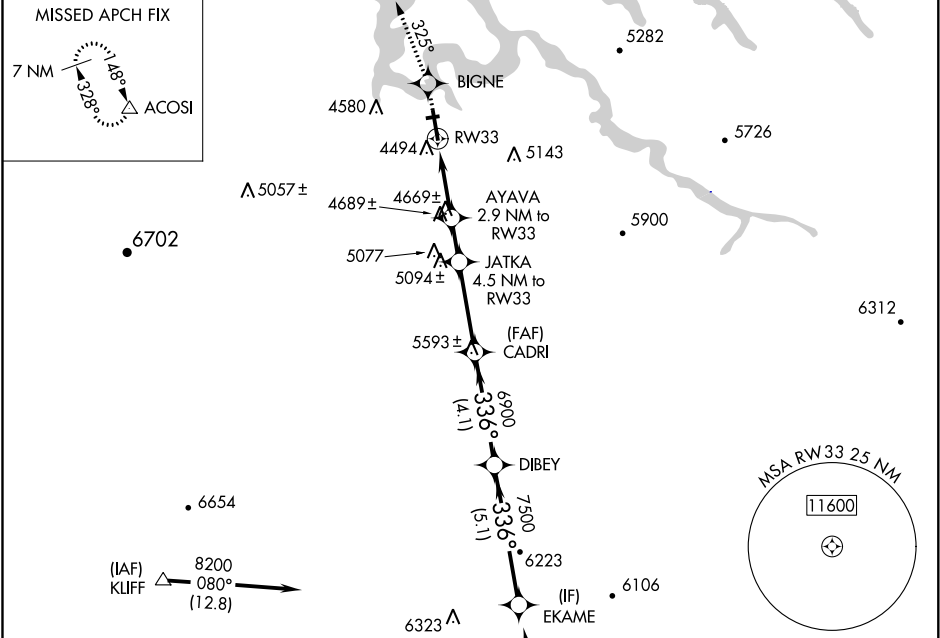
PAGE MUNI (PGA)

▼

For uncompensated Baro-VNAV systems, LNAV/VNAV NA below -23°C (-9°F) or above 41°C (105°F).
DME/DME RNP-0.3 NA. Circling NA to Rwy 7-25.

MISSED APPROACH: Climb to 8500 direct BIGNE and via 325° track to ACOSI and hold, continue climb-in-hold to 8500.

ASOS 120.625	DENVER CENTER 127.55 256.875	UNICOM 122.8 (CTAF) 0
------------------------	--	---------------------------------



ELEV 4316	D TDZE 4316
-----------	--------------------

Procedure NA for arrivals at CELAY via V208 southbound.

8500

BIGNE

325° tr

ACOSI

*LNAV only.

AYAVA 2.9 NM to RW33

JATKA 4.5 NM to RW33

CADRI

DIBEY

EKAME

*1.8 NM to RW33

RW33

RW33

5280

5800

6900

7500

8200

1.8 NM

1.1 NM

1.6 NM

3.3 NM

4.1 NM

5.1 NM

Procedure Turn NA

GP 3.00°

TCH 50

CATEGORY	A	B	C	D
LPV DA	4566-1		250 (300-1)	
LNAV/VNAV DA	4744-1½		428 (500-1½)	
LNAV MDA	4920-1	604 (700-1)	4920-1¾ 604 (700-1¾)	4920-2 604 (700-2)
CIRCLING	4920-1	604 (700-1)	4920-1¾ 604 (700-1¾)	4920-2 604 (700-2)

REIL Rwy 15 and 33

MRL Rwy 15-33

336° to RW33