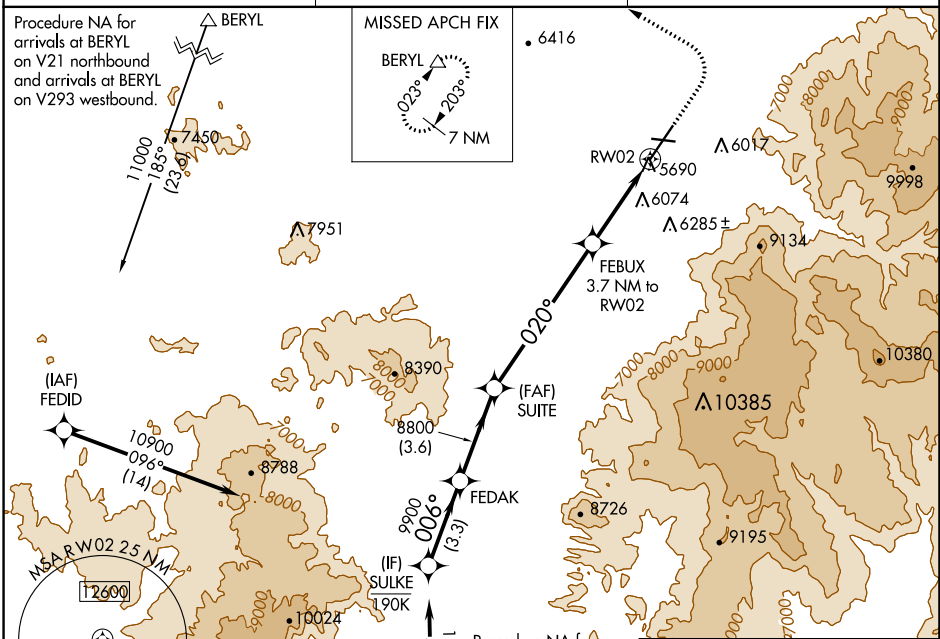


WAAS CH 49143 W02A	APP CRS 020°	Rwy Idg TDZE 5592 Apt Elev 5622
--	------------------------	---

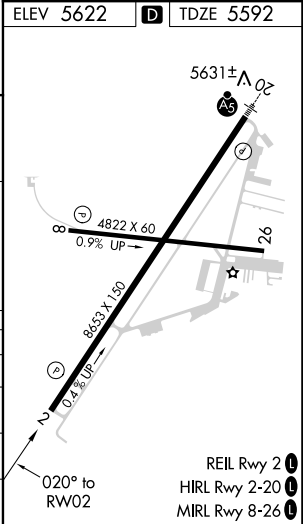
RNAV (GPS) RWY 2
CEDAR CITY RGNL (CDC)

RNP APCH.	MISSED APPROACH: Climb to 6800 then climbing left turn to 9800 direct BERYL and hold.
Circling NA east of Rwy 2-20. For uncompensated Baro-VNAV systems, LNAV/VNAV NA below -19°C or above 54°C.	

ASOS 119.025	SALT LAKE CITY CENTER 125.575 379.275	UNICOM 123.0 (CTAF) 0
------------------------	---	---------------------------------



	SULKE		FEDAK		SUITE		FEBUX		MATZO		BERYL	
	10900		8800		8800		9900		6800		9800	
	GP 3.00°		006°		020°		006°		020°		020°	
	TCH 49		8800		8800		3.7 NM to RW02		1.9 NM to RW02		0.9% UP	
	3.3 NM		3.6 NM		6.3 NM		1.8 NM		1.9 NM			
CATEGORY	A		B		C		D					
LPV DA			5867-7/8		275 (300-7/8)							
LNAV/VNAV DA			6394-2 1/2		802 (800-2 1/2)							
LNAV MDA	6240-1		648 (700-1)		6240-1 7/8		648 (700-1 7/8)					
CIRCLING	6240-1		618 (700-1)		6240-1 7/8		618 (700-1 7/8)		6240-2		618 (700-2)	



SW-4, 31 DEC 2020 to 28 JAN 2021

SW-4, 31 DEC 2020 to 28 JAN 2021