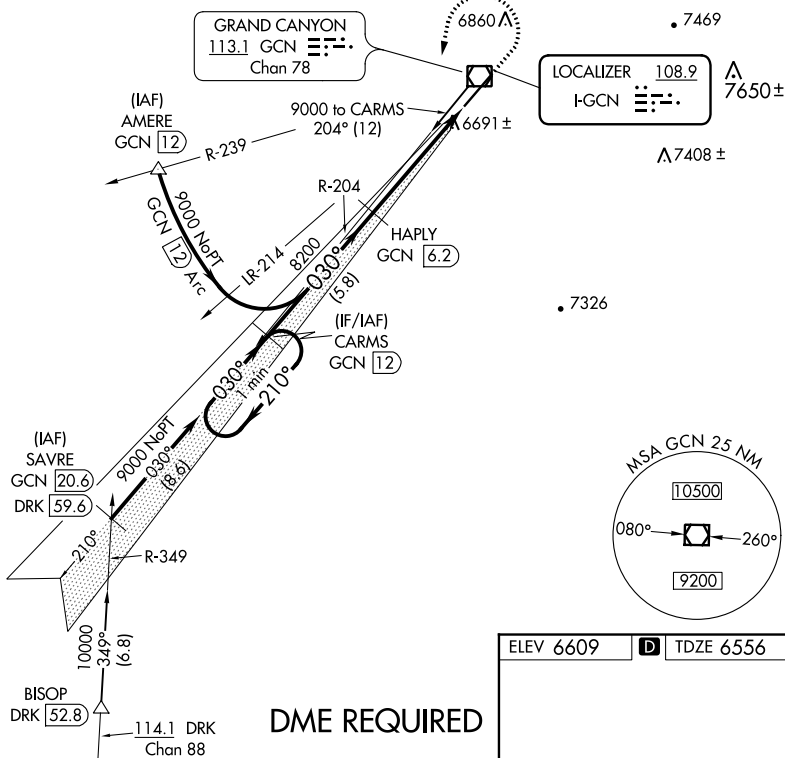


ILS or LOC RWY 3  
GRAND CANYON NATIONAL PARK (GCN)

**MISSED APPROACH:** Climb to 7000 then climbing left turn to 9000 on heading 180° and on GCN VOR/DME R-204 direct CARMS/GCN 12 DME and hold.

UNICOM  
122.95

## DME REQUIRED

