

WAAS CH 86340 W03A	APP CRS 030°	Rwy Idg TDZE 6556 Apt Elev 6609
--	------------------------	---

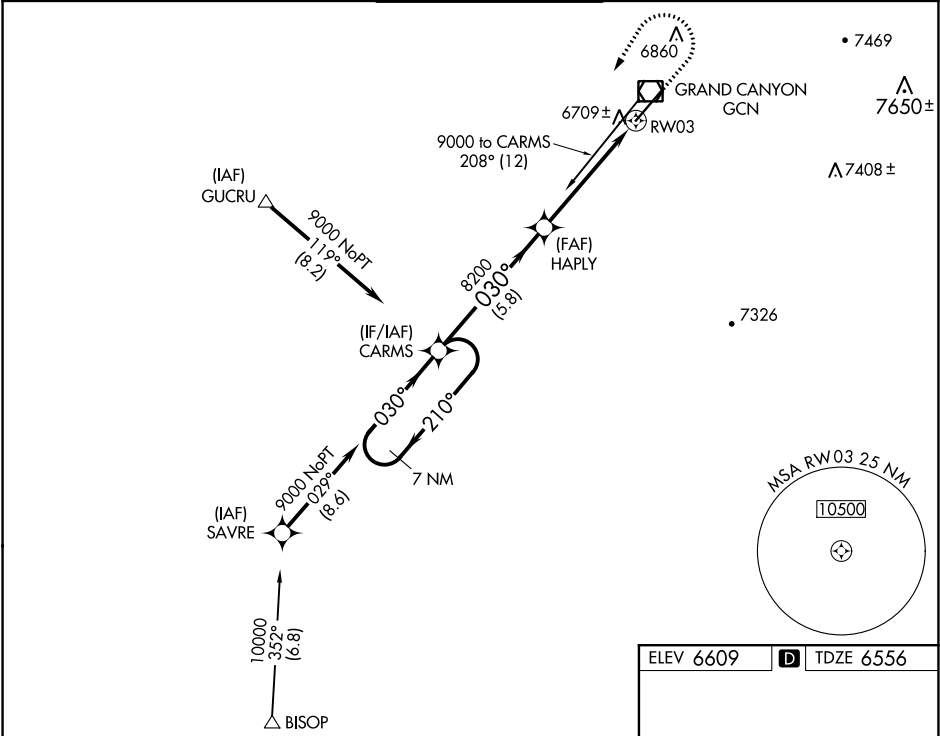
RNAV (GPS) RWY 3

GRAND CANYON NATIONAL PARK (GCN)

For uncompensated Baro-VNAV systems, LNAV/VNAV NA below -12°C (11°F) or above 44°C (111°F).
DME/DME RNP-0.3 NA.

MISSED APPROACH: Climb to 7000 then climbing left turn to 9000 direct CARMS and hold.

ATIS 124.3	LOS ANGELES CENTER 124.85 319.2	CANYON TOWER ★ 119.0 (CTAF) 0	GND CON 121.9	UNICOM 122.95
----------------------	---	---	-------------------------	-------------------------



7 NM Holding Pattern		CARMS	7000	9000	CARMS
9000 ← 210°		030° →	030°	8200	* 1.2 NM to RW03
GP 3.00°		TCH 58	8200	HAPLY	* LNAV only
			5.8 NM	3.9 NM	1.2 NM
CATEGORY	A	B	C	D	
LPV DA		6797-3/4	241 (200-3/4)		
LNAV/VNAV DA		6981-1 1/2	425 (400-1 1/2)		
LNAV MDA	6960-1	404 (400-1)	6960-1 1/8	404 (400-1 1/8)	
CIRCLING	7140-1 1/4 531 (600-1 1/4)	7200-1 1/2 591 (600-1 1/2)	7280-3 671 (700-3)	7620-3 1011 (1100-3)	

