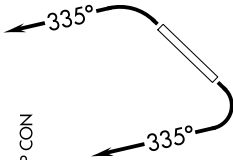


SW-4, 31 DEC 2020 to 28 JAN 2021

TOP ALTITUDE:
ASSIGNED BY ATC

ATIS ★
118.6
CLNC DEL
124.8
GND CON
121.6
SCOTTSDALE TOWER ★
119.9
PHOENIX DEP CON
120.7 239.0



DEPARTURE ROUTE DESCRIPTION

TAKEOFF RUNWAY 3: Climbing left turn heading 335° or as assigned by ATC, thence. . . .

TAKEOFF RUNWAY 21: Climbing right turn heading 335° or as assigned by ATC. Thence. . . .

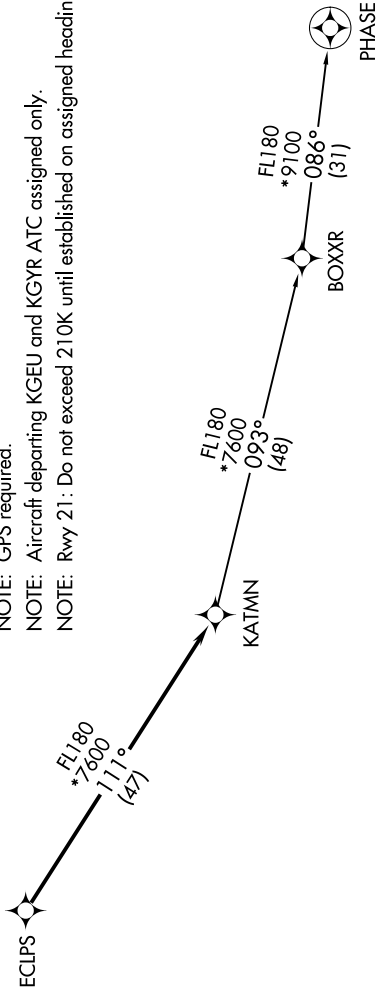
. . . on RADAR vectors to ECLPS, then on track 111° to KATMN, then on (transition). Maintain ATC assigned altitude, expect filed altitude 3 minutes after departure.

PHASE TRANSITION (KATMN6.PHASE)

TAKEOFF MINIMUMS

Rwy 3: Standard with minimum climb of 445' per NM to 4600.
Rwy 21: Standard with minimum climb of 300' per NM to 4600.

- NOTE: RNAV 1.
- NOTE: Turbojets and turboprops only.
- NOTE: RADAR required.
- NOTE: GPS required.
- NOTE: Aircraft departing KGEU and KGYR ATC assigned only.
- NOTE: Rwy 21: Do not exceed 210K until established on assigned heading.



NOTE: Chart not to scale.

SW-4, 31 DEC 2020 to 28 JAN 2021