

APP CRS <b>032°</b>	Rwy Idg	<b>7110</b>
	TDZE	<b>1470</b>
	Apt Elev	<b>1510</b>

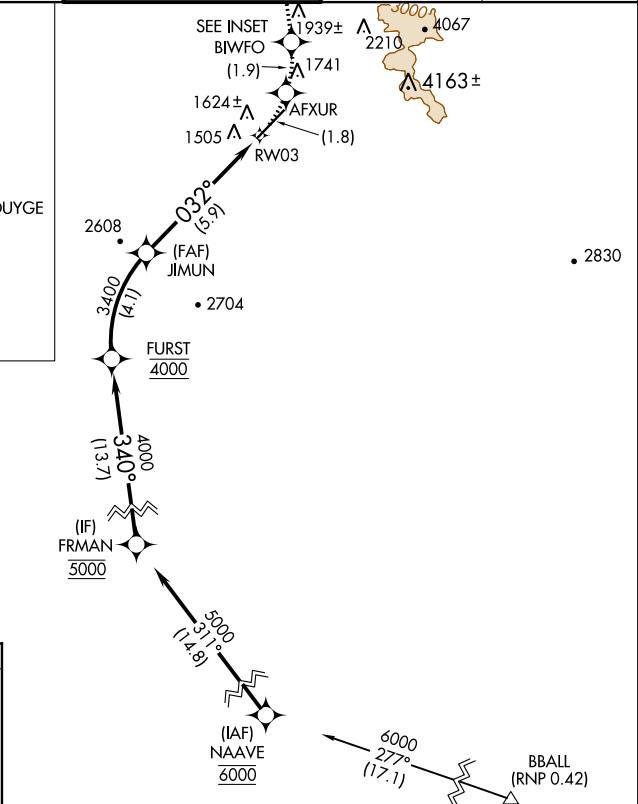
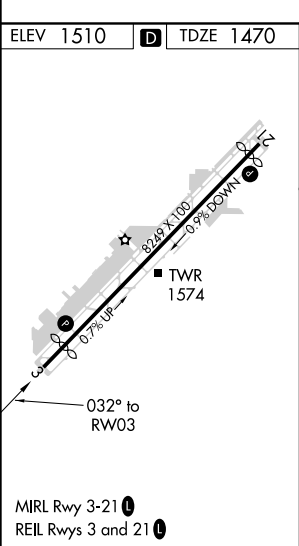
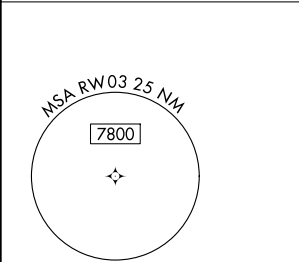
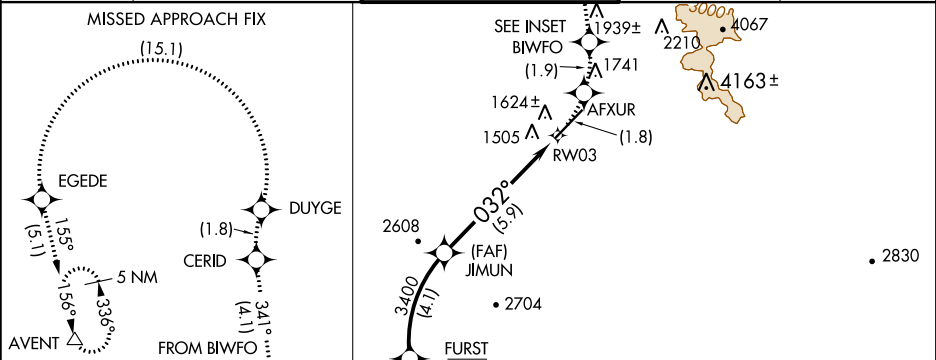
RNAV (RNP) Z RWY 3

SCOTTSDALE (SDL)

**⚠** RF and GPS required. Visibility reduction by helicopters NA.  
For uncompensated Baro-VNAV systems, procedure NA below  
1°C (31°F) or above 54°C (130°F). When local altimeter setting not  
received procedure NA. Missed approach requires RNP less than 1.0.

MISSED APPROACH: Climb to 5000 via left turn to  
AFXUR, and via left turn to BIWFO, and via track 341°  
to CERID, and via right turn to DUYGE, and via left turn  
to EGEDE, and via track 155° to AVENT and hold.

ATIS ★ <b>118.6</b>	PHOENIX APP CON <b>120.7 239.0</b>	SCOTTSDALE TOWER ★ <b>119.9 (CTAF) 0</b>	GND CON <b>121.6</b>	CLNC DEL <b>124.8</b>
------------------------	---------------------------------------	---	-------------------------	--------------------------



VGSI and RNAV glidepath not coincident (VGSI Angle 4.00/TCH 59).			
FRMAN	FURST	JIMUN	RW03
5000	4000	3400	032°
Procedure Turn NA			
GP 3.00°			
TCH 60			
13.7 NM 4.1 NM 5.9 NM			
CATEGORY	A	B	C
RNP 0.30 DA	1829-1¼	359 (400-1¼)	NA
AUTHORIZATION REQUIRED			