

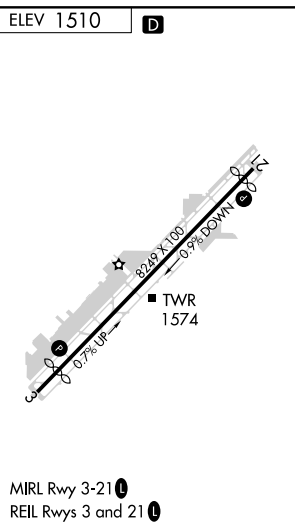
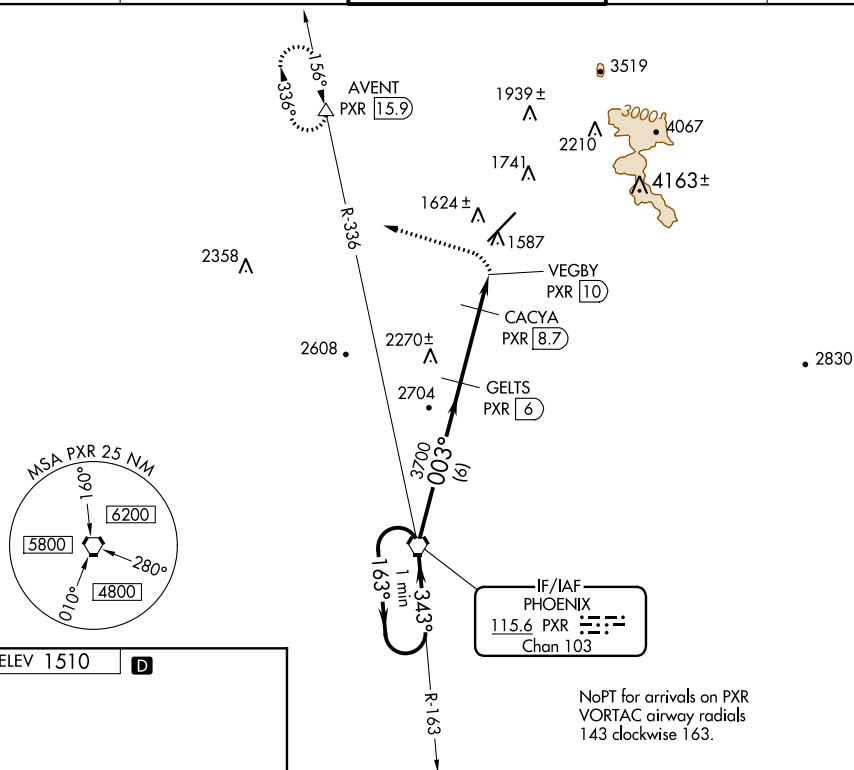
VORTAC PXR 115.6 Chan 103	APP CRS 003°	Rwy Idg TDZE Apt Elev	N/A N/A 1510
---	------------------------	-----------------------------	---

VOR/DME-A
SCOTTSDALE (SDL)

T When local altimeter setting not received, use
A Phoenix Sky Harbor altimeter setting and increase
all MDAs 100 feet and Cat C visibility $\frac{1}{4}$ mile.

MISSED APPROACH: Climbing left turn to 7000 on heading 280° and on PXR VORTAC R-336 to AVENT/PXR 15.9 DME and hold, continue climb-in-hold to 7000.

ATIS ★ 118.6	PHOENIX APP CON 120.7 239.0	SCOTTSDALE TOWER ★ 119.9 (CTAF) 0	GND CON 121.6	CLNC DEL 124.8
------------------------	---------------------------------------	---	-------------------------	--------------------------



<div><div><div>One Minute Holding Pattern</div><div><div><div>4200</div><div>←163°</div><div>343°→</div></div><div><div>003°</div><div>3700</div><div>2700</div></div><div><div>6 NM</div><div>2.7 NM</div><div>1.3 NM</div></div></div><div><div><div>PXR VORTAC</div><div>GELTS PXR (6)</div><div>7000 hdg 280°</div><div>CACYA PXR (8.7)</div><div>VEGBY PXR (10)</div></div><div><div>AVENT △</div><div>PXR R-336</div></div></div></div></div>				
CATEGORY	A	B	C	D
CIRCLING	2380-1½ 870 (900-1½)		2380-2½ 870 (900-2½)	2380-2¾ 870 (900-2¾)