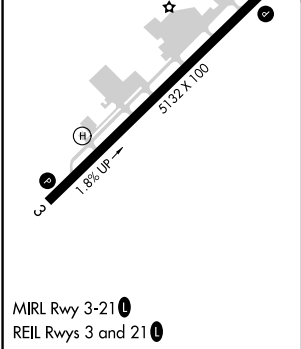
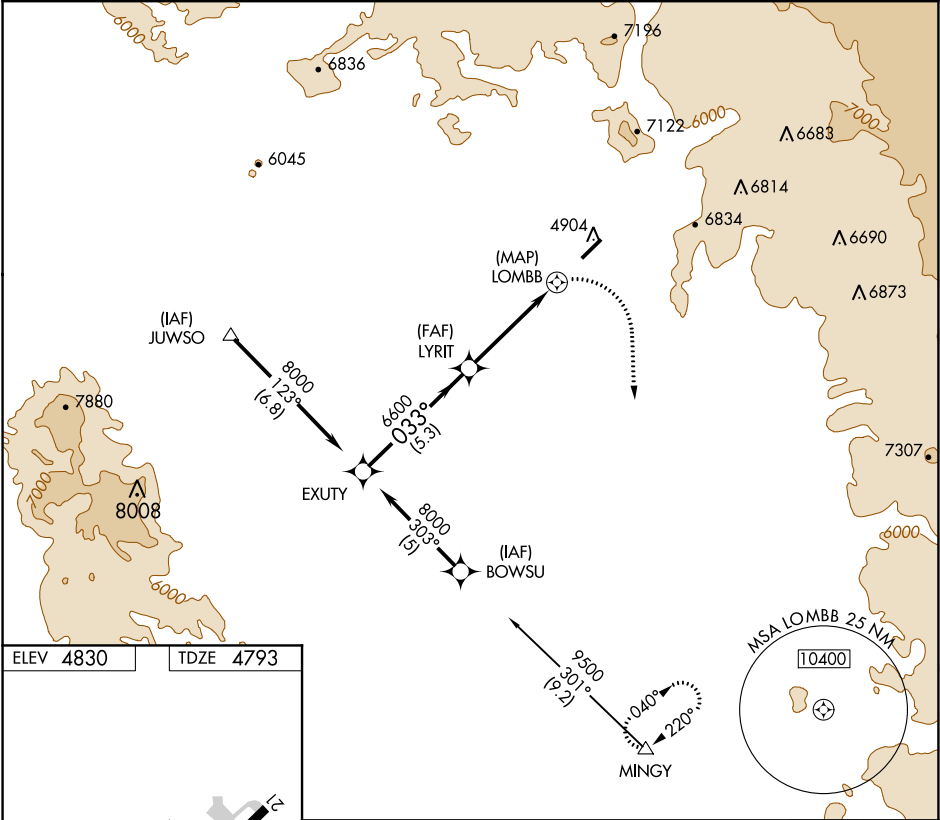


APP CRS	Rwy Idg	5132
033°	TDZE	4793
	Apt Elev	4830

GPS RWY 3  
SEDONA (SE/Z)

▼ NA	When local alimeter not received, procedure not authorized. Cat D circling not authorized northwest of Rwy 3-21. Circling Rwy 21 NA at night.	MISSED APPROACH: Climbing right turn to 12000 direct MINGY WP and hold.
---------	---	--

AWOS-3PT 118.525	PHOENIX APP CON 126.375 236.775	UNICOM 123.0 (CTAF) 0
---------------------	------------------------------------	--------------------------



EXUTY	VGSI and descent angles not coincident (VGSI Angle 3.00/TCH 43).		12000	MINGY
8000	033°	6600	3.00° TCH 50	
Procedure Turn NA	5.3 NM	4.4 NM	1.3 NM	
CATEGORY	A	B	C	D
S-3	6140-1½ 1347 (1400-1½)	6240-1½ 1447 (1500-1½)	6560-3	1767 (1800-3)
CIRCLING	6140-1½ 1310 (1400-1½)	6240-1½ 1410 (1500-1½)	NA	

SW-4, 31 DEC 2020 to 28 JAN 2021

SW-4, 31 DEC 2020 to 28 JAN 2021