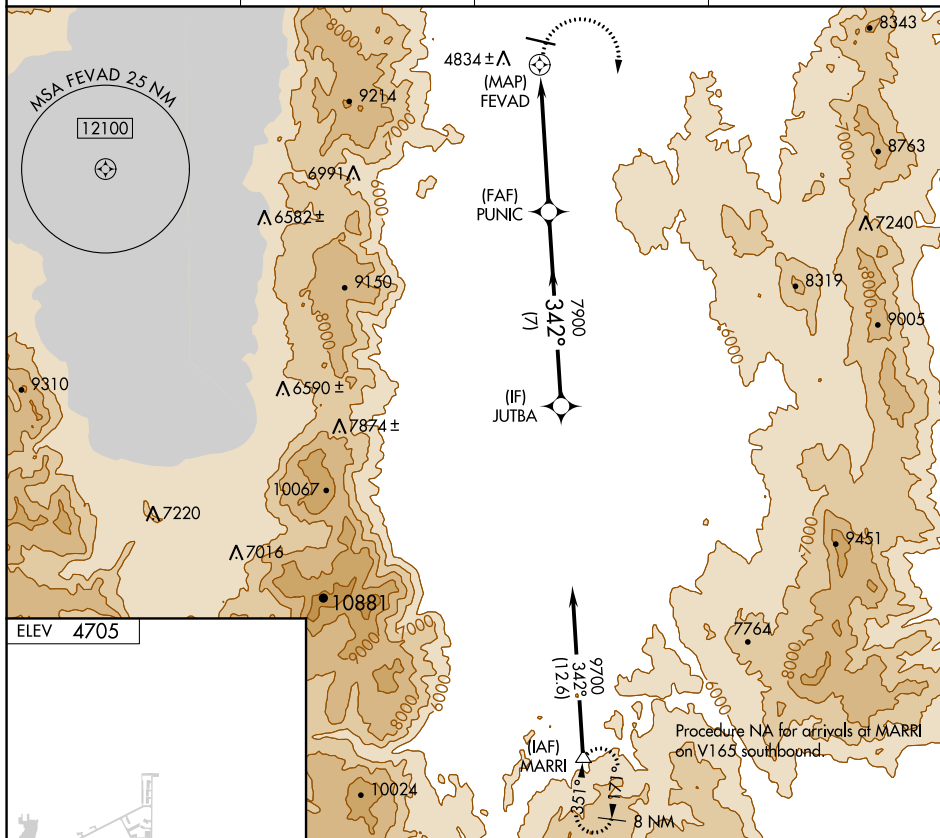


RNAV (GPS)-A
CARSON (CXP)

T Procedure NA at night. When local altimeter setting not received,
A NA use Reno/Tahoe Intl altimeter setting and increase all MDA 540 feet.
Circling NA north of Rwy 9-27.

MISSED APPROACH: Climbing right turn to 13400 direct MARRI and hold, continue climb-in-hold to 13400.

UNICOM
123.0 (CTAF) **L**



TDZL Rwy 9 and 27 **L**
MIRL Rwy 9-27 **L** ★
REIL Rwy 9 and 27 **L**

