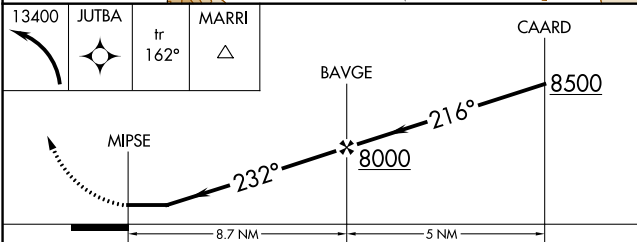
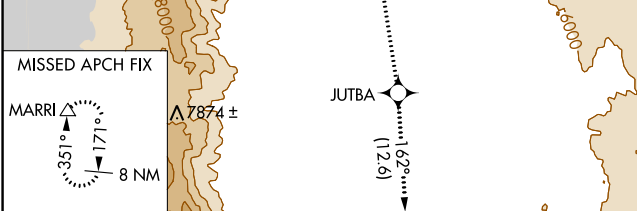
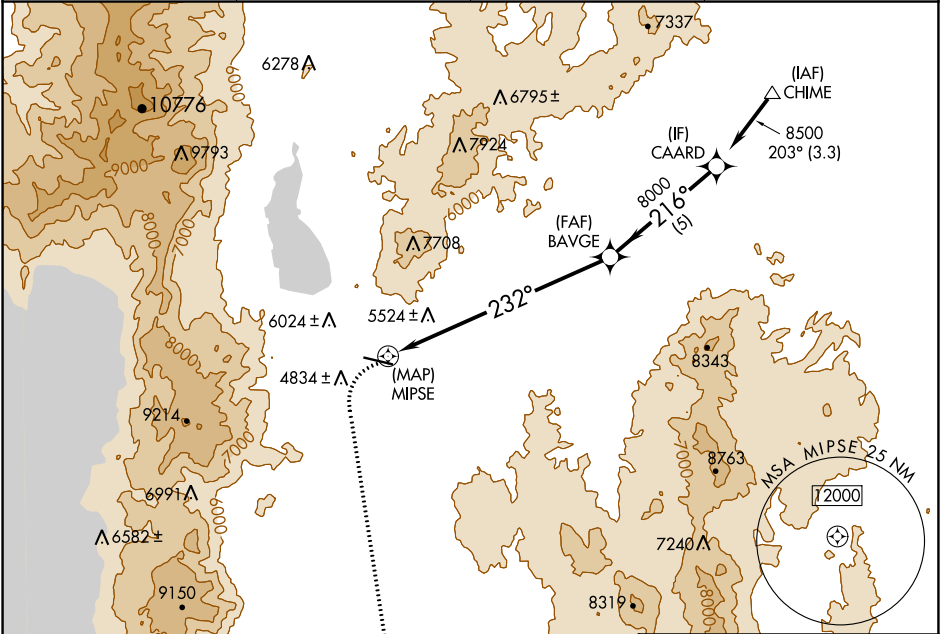


APP CRS	Rwy Idg	N/A
232°	TDZE	N/A
	Apt Elev	4705

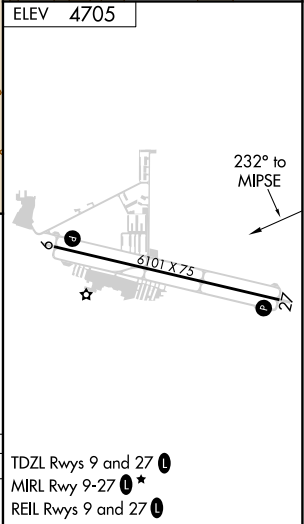
RNAV (GPS)-B  
CARSON (CXP)

RNP APCH.	MISSED APPROACH: Climbing left turn to 13400 direct JUTBA and on track 162° direct MARRI and hold, continue climb-in-hold to 13400.
Circling NA north of Rwy 9-27. Procedure NA at night.	

AWOS-3PT 119.925	NORCAL APP CON 119.2 279.55	CLNC DEL 133.25	UNICOM 123.0 (CTAF)
---------------------	--------------------------------	--------------------	------------------------



CATEGORY	A	B	C	D
CIRCLING	6340-1¼ 1635 (1700-1¼)	6340-1½ 1635 (1700-1½)	6340-3 1635 (1700-3)	7660-3 2955 (3000-3)



SW-4, 31 DEC 2020 to 28 JAN 2021

SW-4, 31 DEC 2020 to 28 JAN 2021