

**TOP ALTITUDE:
ASSIGNED BY ATC**

ATIS
126.5
CLINC DEL
123.9
GND CON
121.8
DEER VALLEY TOWER★
118.4 (Rwy 7R-25L)
120.2 (Rwy 7L-25R)
PHOENIX DEP CON
120.7 239.0

NOTE: RNAV 1.

NOTE: RNAV 1.
NOTE: Turbojets and turboprops only.

NOTE: RADAR required.

NOTE: GPS required

NOTE: Aircraft requesting FL220 and below must file BLYTHE TRANSITION.
NOTE: Turbojets landing LAX, file MESSI TRANSITION.

NOTE: Aircraft landing other than LAX and turboprops landing at LAX:

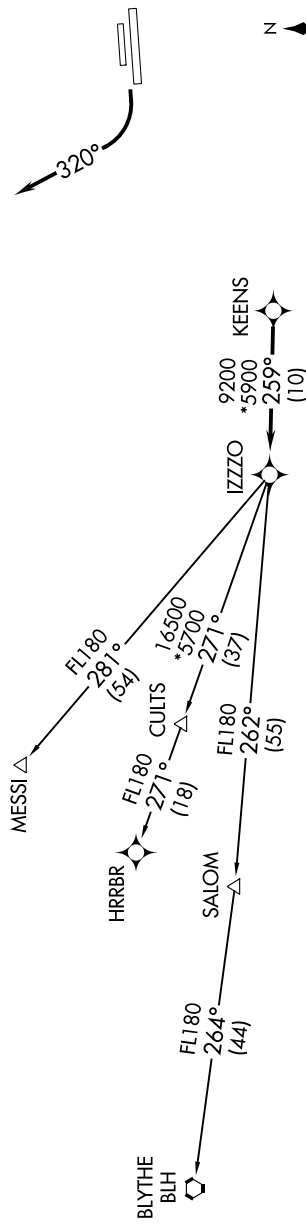
Requesting FL240 and above, file HRRBR TRANSITION.

NOTE: Aircraft departing KGEU and KGYR ATC assigned only.

TAKEOFF MINIMUMS

Rwys 7L/R: NA - Obstacles.

Rwys 25L/R: Standard with minimum climb of 370' per NM to 4600.



DEPARTURE ROUTE DESCRIPTION

TAKEOFF RUNWAYS 25L/R: Climbing right turn heading 320° or as assigned by ATC, thence...

...expect RADAR vectors to KEENS, then on track 259° to IZZO, then on (transition).

Maintain ATC assigned altitude, expect filed altitude 3 minutes after departure.

BLYTHE TRANSITION (IZZO7.BLH)

HRRBR TRANSITION (JZZO7.HRRBR)

MESSI TRANSITION (IZZ07.MESSI)

IZZZO SEVEN DEPARTURE (RNAV)

(IZZZO7.IZZZO) 24MAY18

PHOENIX, ARIZONA
PHOENIX DEER VALLEY (DVT)

SW-4, 31 DEC 2020 to 28 JAN 2021