

WAAS CH 90525 W04B	APP CRS 039°	Rwy Idg TDZE Apt Elev	5100 1383 1394
--	------------------------	-----------------------------	---

RNAV (GPS) RWY 4R

FALCON FIELD (F'F'Z)

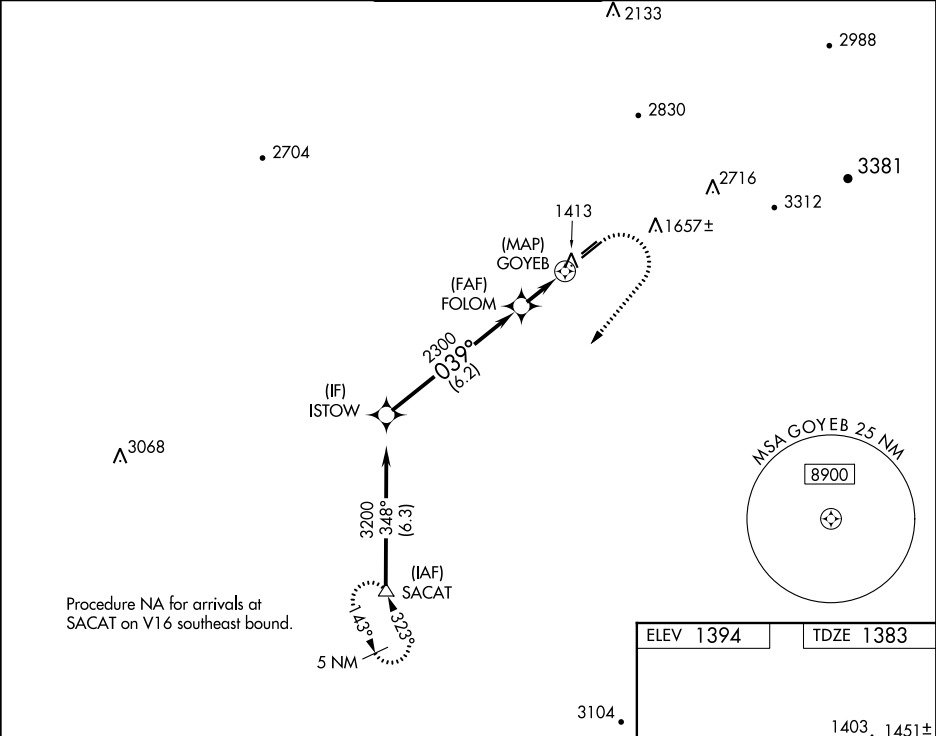
⚠

DME/DME RNP-0.3 NA. When local altimeter setting not received, use Phoenix Sky Harbor Intl altimeter setting and increase all MDA 80 feet and increase LNAV Cat C visibility 1/8 mile. Helicopter visibility reduction below 1 SM NA.

MISSED APPROACH:

Climb to 1900 then climbing right turn to 5000 direct SACAT and hold, continue climb-in-hold to 5000.

ATIS 118.25	PHOENIX APP CON 120.7 239.0	FALCON TOWER ★ 124.6 (CTAF) 0	GND CON 121.3	UNICOM 122.95
-----------------------	---------------------------------------	---	-------------------------	-------------------------



ISTOW					VGSI and descent angles not coincident (VGSI Angle 4.00/TCH 42).					1900	5000	SACAT
3200					039°					↑		
					FOLOM					↘		
					2300					3.00°		
										TCH 41		
										GOYEB		
										0.8		
										6.2 NM		
										2 NM		
CATEGORY					A					B		
LP MDA					1680-1					297 (300-1)		
LNAV MDA					1800-1					417 (500-1)		
CIRCLING					1900-1					506 (600-1)		

ELEV 1394

TDZE 1383