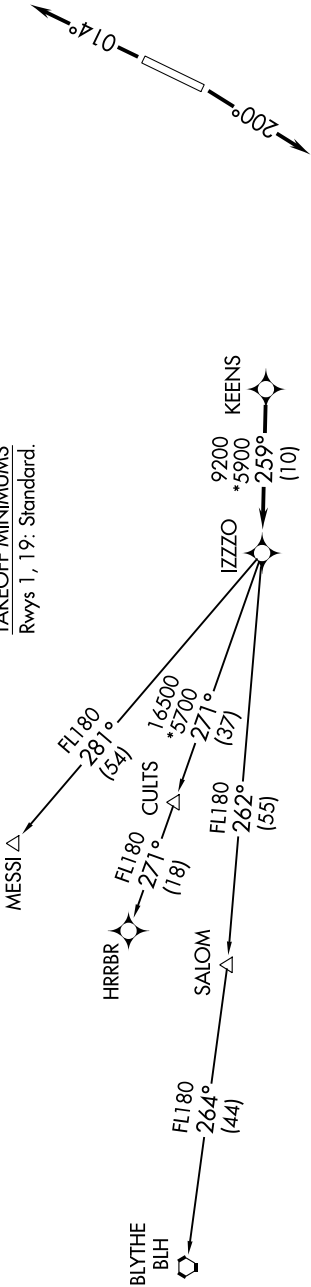


ATIS 119.425
GND CON 118.0
GLENDAL TOWER *
121.0
LUKE DEP CON *
118.15 363.125
PHOENIX DEP CON
120.7 239.0

TOP ALTITUDE:
ASSIGNED BY ATC

- RNAV 1.
NOTE: Turbojets and turboprops only.
NOTE: RADAR required.
NOTE: GPS required.
NOTE: Aircraft requesting FL220 and below must file BLYTHE TRANSITION.
NOTE: Turbojets landing LAX, file MESSI TRANSITION.
NOTE: Aircraft landing other than LAX and turboprops landing at LAX: Requesting FL240 and above, file HRRBR TRANSITION.
NOTE: Aircraft departing KGEU and KGYR ATC assigned only.

TAKEOFF MINIMUMS
Rwys 1, 19: Standard.



DEPARTURE ROUTE DESCRIPTION

TAKEOFF RUNWAY 1: Climb heading 014° or as assigned by ATC, thence. . .
TAKEOFF RUNWAY 19: Climb heading 200° or as assigned by ATC, thence. . .
. . . expect RADAR vectors to KEENS, then on track 259° to IZZO, then on (transition).
Maintain ATC assigned altitude, expect filed altitude 3 minutes after departure.

- BLYTHE TRANSITION (IZZZO7.BLH)
HRRBR TRANSITION (IZZZO7.HRRBR)
MESSI TRANSITION (IZZZO7.MESSI)

NOTE: Chart not to scale.