

WAAS CH 87004 W19A	APP CRS 194°	Rwy Idg TDZE 1065 Apt Elev 1071
--	------------------------	---

RNAV (GPS) RWY 19

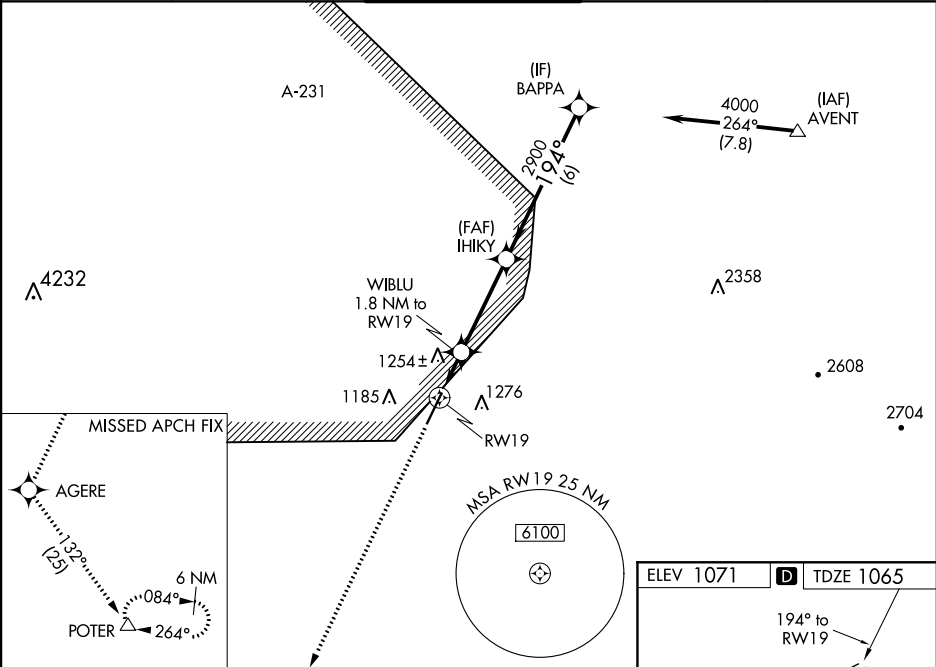
GLENDALE MUNI (GEU)

RNP APCH.

For uncompensated Baro-VNAV systems, LNAV/VNAV NA below -17°C or above 47°C.
Rwy 19 helicopter visibility reduction below ¾ SM NA. VDP and Baro-VNAV NA when using Phoenix Sky Harbor Intl altimeter setting. When local altimeter setting not received, use Phoenix Sky Harbor Intl altimeter setting: increase LPV DA to 1384 feet; increase LNAV/VNAV DA to 1617 feet and all Cats visibility ¼ SM; increase all MDA 60 feet and LNAV Cat C and D visibility ¼ SM.

MISSED APPROACH: Climb to 5000 direct AGERE then climb to 8000 on track 132° to POTER and hold.

ATIS 119.425	LUKE APP CON★ 118.15 363.125	GLENDALE TOWER★ 121.0 (CTAF) 0	GND CON 118.0	UNICOM 122.95
------------------------	--	--	-------------------------	-------------------------



5000	AGERE	8000	POTER	VGSI and RNAV glidepath not coincident (VGSI Angle 3.00/TCH 30).
↑	✱	↑ tr 132°	△	
*LNAV only				
	WIBLU 1.8 NM to RW19	IHIKY 2900	BAPPA 4000	Procedure Turn NA
	*1.1 NM to RW19			
	1680*	2900	4000	GP 3.00° TCH 55
	1.1 NM	0.7	3.7 NM	6 NM
CATEGORY	A	B	C	D
LPV DA	1339-1 274 (300-1)			
LNAV/VNAV DA	1572-1¾ 507 (600-1¾)			
LNAV MDA	1540-1 475 (500-1)		1540-1¾ 475 (500-1¾)	1540-1½ 475 (500-1½)

