

APP CRS
352°

Rwy Idg
TDZE
Apt Elev

N/A
N/A
5157

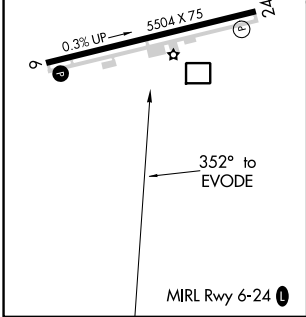
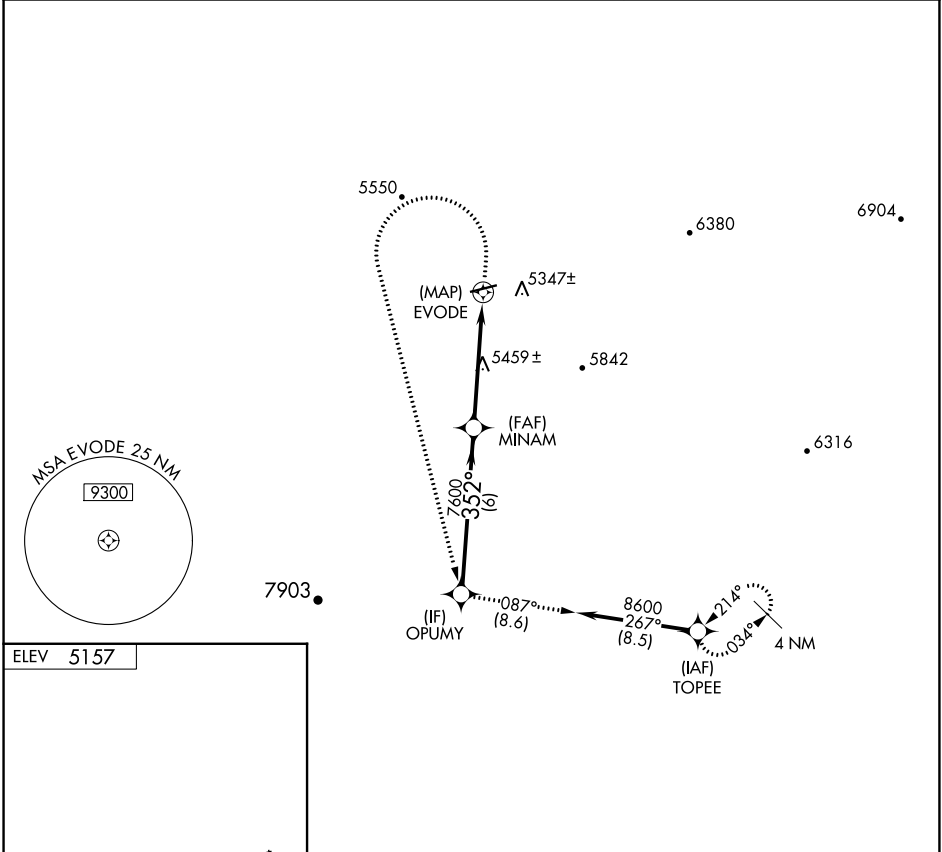
RNAV (GPS)-A
PAYSON (PAN)

NA

GPS or RNP- 0.3 required. DME/DME RNP- 0.3 NA.

MISSED APPROACH: Climb to 6700 then climbing left turn to 9000 direct OPUMY WP and via 087° track to TOPEE WP and hold.

AWOS-3PT 119.325	ALBUQUERQUE CENTER 127.675 306.2	UNICOM 122.8 (CTAF)
---------------------	-------------------------------------	------------------------



OPUMY	6700	9000	OPUMY	tr	TOPEE
8600	352°	MINAM	7600	EVODE	
Procedure Turn NA	6 NM	4.9 NM			
CATEGORY	A	B	C	D	
CIRCLING	5720-1	563 (600-1)	5760-1¾ 603 (700-1¾)	5760-2 603 (700-2)	

SW-4, 31 DEC 2020 to 28 JAN 2021

SW-4, 31 DEC 2020 to 28 JAN 2021