

APP CRS
135°

Rwy Idg
5000

TDZE
2205

Apt Elev
2205

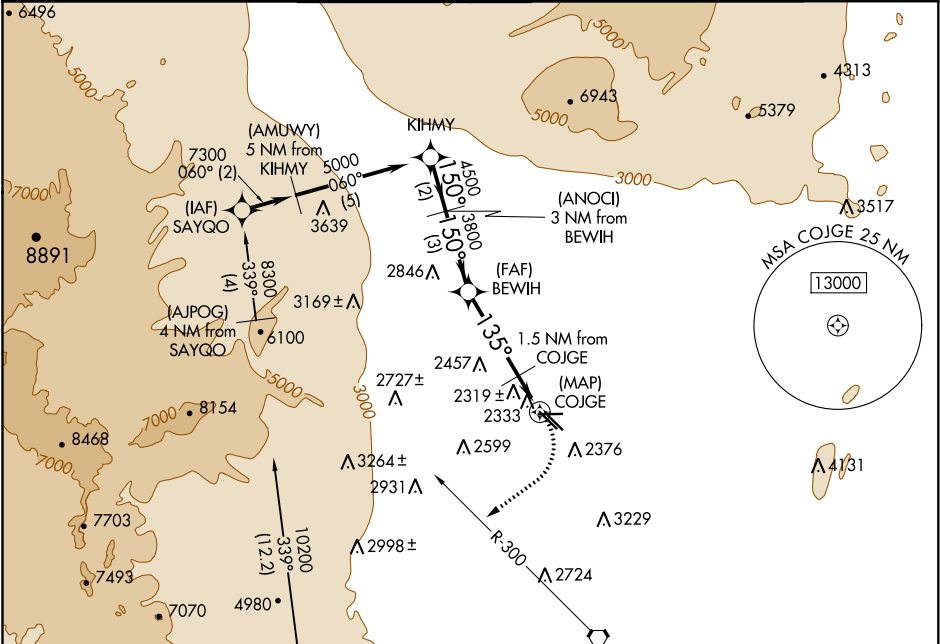
GPS RWY 12R

NORTH LAS VEGAS (VGT')

When local altimeter setting not received, use McCarran Intl altimeter setting and increase all MDA 40 feet and S-12R Cat D visibility ¼ mile. Circling to Rwy 12L-30R NA.

MISSED APPROACH: Climbing right turn to 4000 via heading 220° and LAS R-300 to LAS VORTAC.

ATIS 118.05	LAS VEGAS APP CON 119.4 360.85	NORTH LAS VEGAS TOWER* 125.7 (CTAF) 360.75	GND CON 121.7	CLNC DEL 124.0	UNICOM 122.95
-----------------------	--	--	-------------------------	--------------------------	-------------------------



ELEV 2205

TDZE 2205

135° to COJGE

Diagram of the approach procedure showing the turn from heading 135° to heading 220° at the COJGE waypoint. The diagram includes altitude markers (5000, 4500, 3800, 2720) and distance markers (2 NM, 3 NM, 3.5 NM, 1.5 NM). It also shows the LAS R-300 and LAS VORTAC.

CATEGORY	A	B	C	D
S-12R	2620-1	415 (500-1)	2620-1¼	415 (500-1¼)
CIRCLING	2680-1	475 (500-1)	2680-1½	2760-2

REIL all Rws

MIRL all Rws