

WAAS CH 53330 W14A	APP CRS 134°	Rwy Idg 8000 TDZE 759 Apt Elev 783
--	------------------------	---

RNAV (GPS) RWY 14

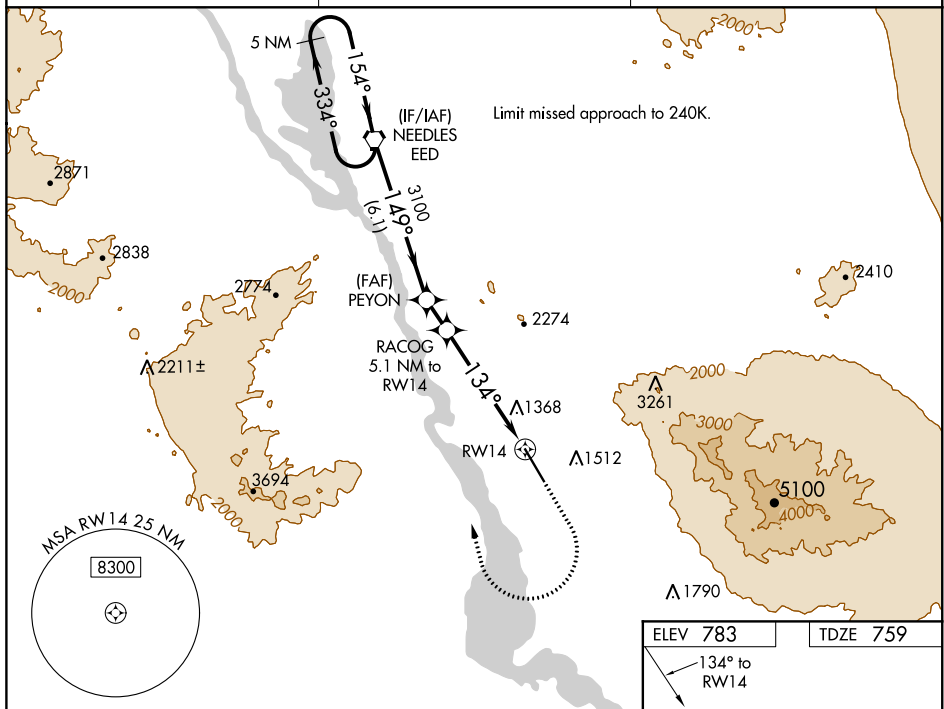
LAKE HAVASU CITY (HII)

NA When local altimeter setting not received, use Needles altimeter setting and increase all MDA 80 feet. Circling NA northeast of Rwy 14-32. DME/DME RNP-0.3 NA. Helicopter visibility reduction below 1 SM NA. When VGSI inop, procedure NA at night.

MISSED APPROACH: Climb to 2600 then climbing right turn to 6000 direct EED VORTAC and hold, continue climb-in-hold to 6000.

AWOS-3
119.025

LOS ANGELES CENTER
134.65 360.65

UNICOM
122.7 (CTAF) **L**

ELEV 783		TDZE 759
----------	--	----------

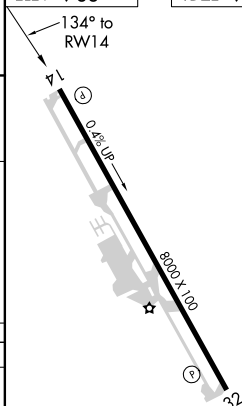


Diagram illustrating a VORTAC holding pattern. The pattern is defined by a 5 NM Holding Pattern, a VORTAC station, and a VORTAC frequency of 113.7. The pattern is divided into three segments: A (6.1 NM), B (1.3 NM), and C (5.1 NM). The pattern is centered on the VORTAC station. The diagram also shows the VORTAC station, the VORTAC frequency (113.7), and the VORTAC identifier (VORTAC). The diagram includes a table with the following data:

CATEGORY	A	B	C	D
LP MDA	2140-1¼ 1381 (1400-1½)	2140-1½ 1381 (1400-1½)	2140-3	1381 (1400-3)
LNAV MDA	2320-1¼ 1561 (1600-1½)	2320-1½ 1561 (1600-1½)	2320-3	1561 (1600-3)
C CIRCLING	2320-1¼ 1537 (1600-1½)	2320-1½ 1537 (1600-1½)	2320-3	1537 (1600-3)