

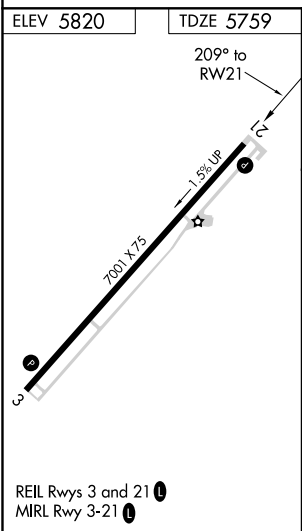
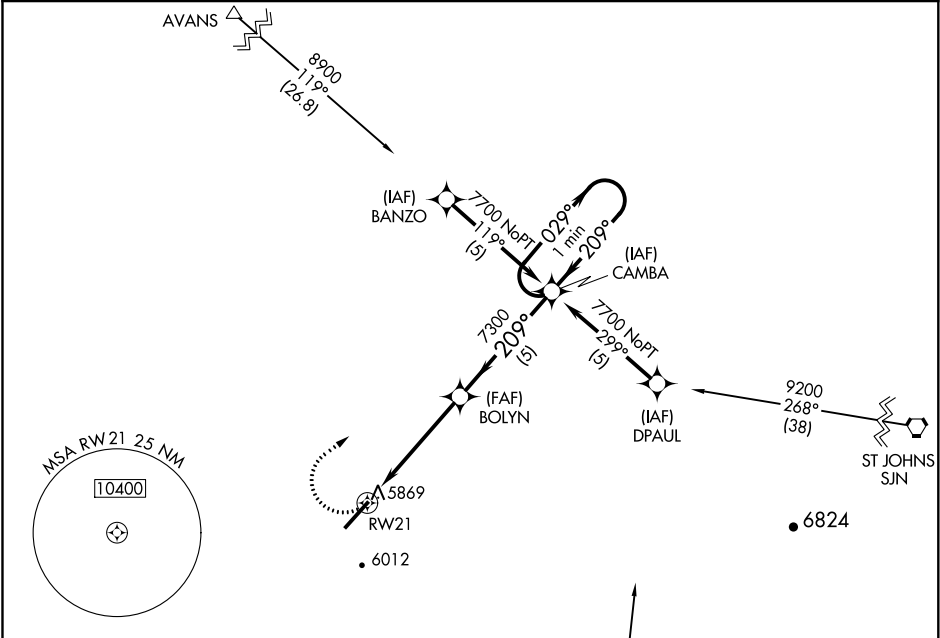


APP CRS	Rwy Idg	7001
209°	TDZE	5759
	Apt Elev	5820

GPS RWY 21  
TAYLOR (TYL)

 NA	MISSED APPROACH: Climbing right turn to 7700 direct CAMBA WP and hold.
---	--

AWOS-3PT 119.075	ALBUQUERQUE CENTER 132.9 239.05	UNICOM 122.7 (CTAF) 
---------------------	------------------------------------	--



<div>7700</div> <div></div>		<div>CAMBA</div> <div></div>		<div>VGSI and descent angles not coincident (VGSI Angle 3.00/TCH 43).</div>		<div>One Minute Holding Pattern</div>			
<div></div>		<div>BOLYN</div>		<div>CAMBA</div>		<div>7700</div>			
<div>5 NM</div>		<div>5 NM</div>							
<div>CATEGORY</div>		<div>A</div>		<div>B</div>		<div>C</div>		<div>D</div>	
<div>S-21</div>		<div>6120-1 361 (300-1)</div>						<div>6120-1¼ 361 (300-1¼)</div>	
<div>CIRCLING</div>		<div>6320-1 500 (500-1)</div>		<div>6380-1 560 (600-1)</div>		<div>6380-1½ 560 (600-1½)</div>		<div>6480-2 660 (700-2)</div>	

SW-4, 31 DEC 2020 to 28 JAN 2021

SW-4, 31 DEC 2020 to 28 JAN 2021