

WAAS CH 56540 W28A	APP CRS 283°	Rwy Idg TDZE 4230 Apt Elev 4230
--	------------------------	---

RNAV (GPS) RWY 28

HAWTHORNE INDUSTRIAL (HTH)

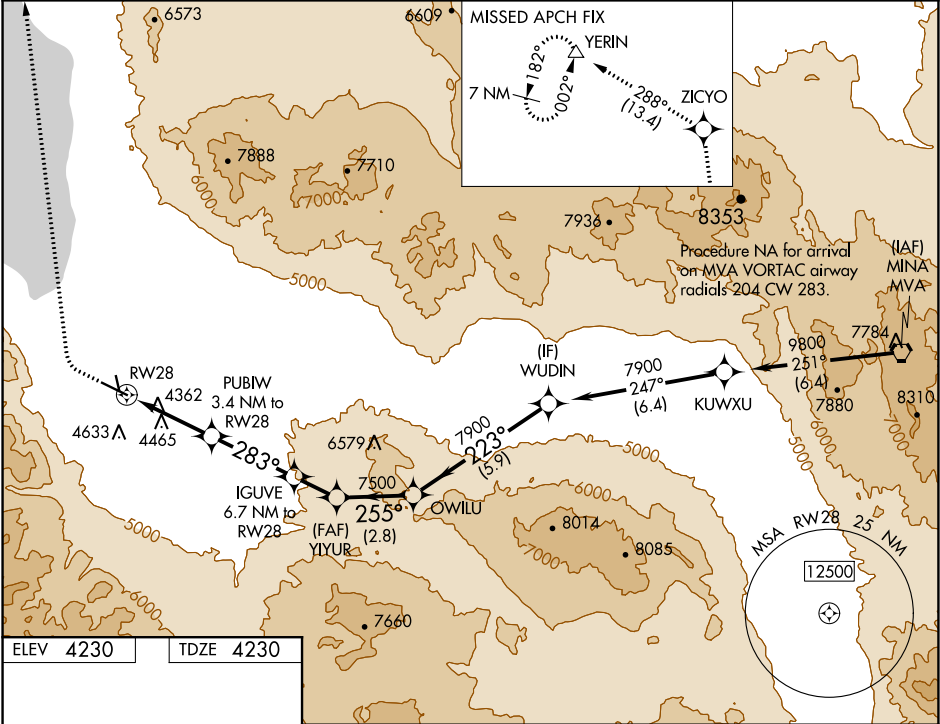
⚠

⚠

Circling NA to Rwy's 15 and 33. When local altimeter setting not received, procedure NA. Circling NA south of Rwy 10-28. DME/DME RNP-0.3 NA. Rwy 28 helicopter visibility reduction below ¾ SM NA.

MISSED APPROACH: Climb to 4750 then climbing right turn to 10000 direct ZICYO and on track 288° to YERIN and hold.

AWOS-3 120.225	OAKLAND CENTER 125.75 284.65	UNICOM 122.8 (CTAF) 0
--------------------------	--	---------------------------------



ELEV 4230

TDZE 4230

10

3250 X 100

33

6000 X 100

283° to RWY 28

REIL Rwy's 10 and 28 0

MIRL Rwy's 10-28 0

4750	10000	ZICYO	tr 288°	YERIN	VGSI and descent angles not coincident (VGSI Angle 3.00/TCH 49).			
		PUBIW	IGUVE	YIYUR	OWILU	WUDIN		
		3.4 NM to RWY 28	6.7 NM to RWY 28					
		1.1 NM to RWY 28						
		3.60° TCH 49						
		5580	6840	7500	7900	7900		
		1.1 NM	2.3 NM	3.3 NM	1.7 NM	2.8 NM	5.9 NM	
CATEGORY	A		B		C		D	
LP MDA	4620-1		390 (400-1)		4620-1½ 390 (400-1½)		NA	
LNAV MDA	4720-1		490 (500-1)		4720-1¾ 490 (500-1¾)		NA	
CIRCLING	4720-1		490 (500-1)		5680-3 1450 (1500-3)		NA	

SW-4, 31 DEC 2020 to 28 JAN 2021

SW-4, 31 DEC 2020 to 28 JAN 2021