

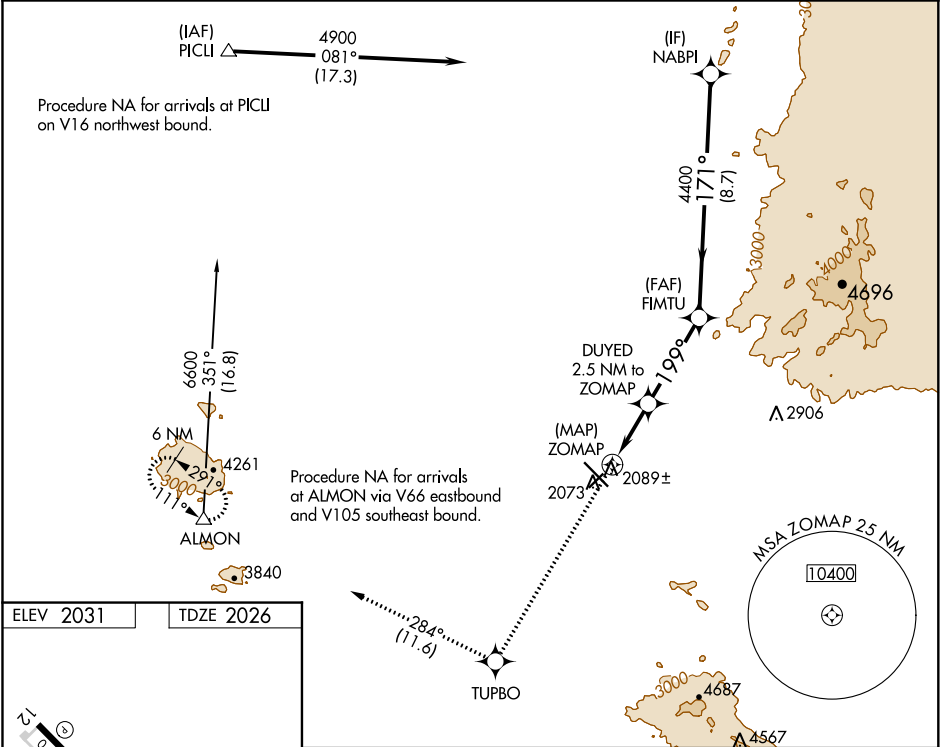
WAAS CH 56325 W21A	APP CRS 199°	Rwy Idg TDZE Apt Elev	3892 2026 2031
--	------------------------	-----------------------------	---

RNAV (GPS) RWY 21

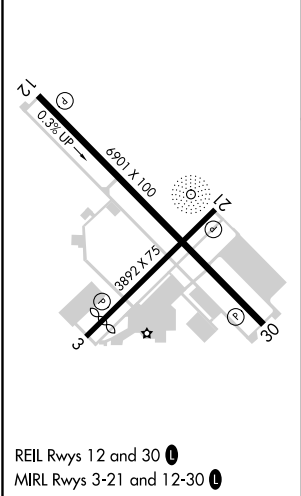
MARANA RGNL (AVQ)

RNP APCH.	MISSED APPROACH: Climb to 6700 direct TUPBO and on track 284° to ALMON and hold, continue climb-in-hold 6700.
NA Rwy 21 helicopter visibility reduction below 1 SM NA. When local altimeter setting not received, use Ryan Field altimeter setting and increase all MDAs 100 feet, increase LP Cat C visibility 1/8 SM and increase LNAV Cat C visibility 1/4 SM.	

AWOS-3 118.375	TUCSON APP CON 119.4 318.1	UNICOM 123.0 (CTAF) 0
--------------------------	--------------------------------------	---------------------------------



ELEV 2031	TDZE 2026
-----------	-----------



6700	TUPBO	tr 284°	ALMON	VGSI and descent angles not coincident (VGSI Angle 3.00/TCH 40).	NABPI
				FMTU	
				DUYED 2.5 NM to ZOMAP	
				ZOMAP	
				3120	
				199°	
				4400	
				171°	
				4900	
				0.5	
				2.5 NM	
				3.6 NM	
				8.7 NM	
CATEGORY	A	B	C	D	
LP MDA	2340-1	314 (400-1)		NA	
LNAV MDA	2640-1	614 (700-1)	2640-1 3/4 614 (700-1 3/4)	NA	

SW-4, 31 DEC 2020 to 28 JAN 2021

SW-4, 31 DEC 2020 to 28 JAN 2021