

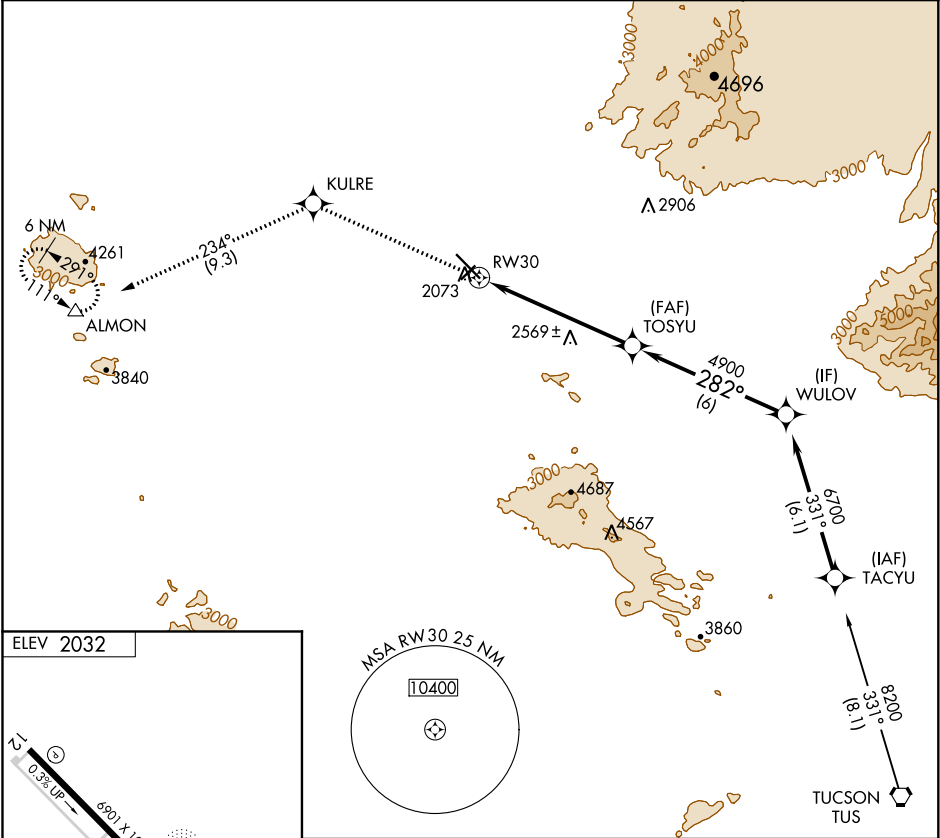
APP CRS	Rwy Idg	N/A
282°	TDZE	N/A
	Apt Elev	2032

RNAV (GPS)-E
MARANA RGNL (AVQ)

⚠ When local altimeter setting not received, use Ryan Field altimeter setting and increase all MDAs 100 feet and increase Circling Cat A visibility ¼ SM and Cat C ½ SM. DME/DME RNP-0.3 NA.

⚠ MISSED APPROACH: Climb to 6000 direct KULRE and 234° track to ALMON and hold, continue climb-in-hold to 6000.

AWOS-3 118.375	TUCSON APP CON 119.4 318.1	UNICOM 123.0 (CTAF) 0
-------------------	-------------------------------	---------------------------------



ELEV 2032

REIL Rwys 12 and 30 **0**
MIRL Rwys 3-21 and 12-30 **0**

6000	KULRE	234° tr	ALMON	TOSYU	WULOV
				4900	6700
					Procedure Turn NA
				6 NM	6 NM
CATEGORY	A	B	C	D	
C CIRCLING	2820-1 788 (800-1)	2820-1¼ 788 (800-1¼)	2820-2¼ 788 (800-2¼)	NA	

SW-4, 31 DEC 2020 to 28 JAN 2021

SW-4, 31 DEC 2020 to 28 JAN 2021