

APP CRS  
207°

Rwy Idg  
5040

TDZE  
4985

Apt Elev  
4985

RNAV (GPS) RWY 22

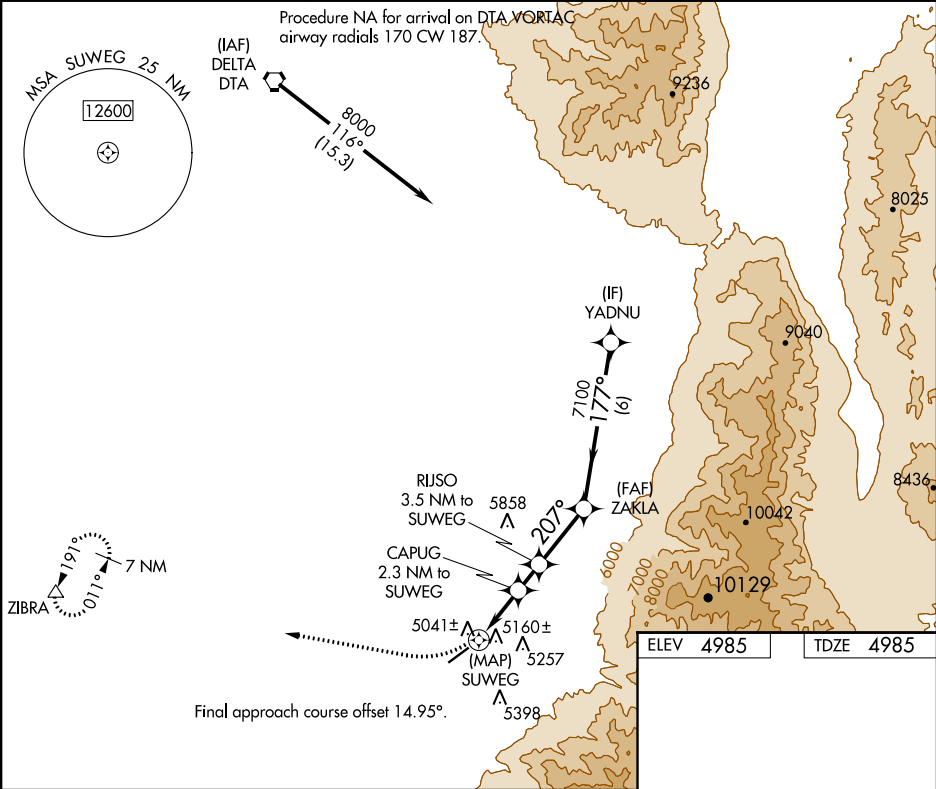
FILLMORE MUNI (FOM)

NA

DME/DME RNP-0.3 NA.  
Rwy 22 helicopter visibility reduction below ¾ SM NA.  
When local altimeter setting not received, procedure NA.

MISSED APPROACH: Climbing right turn to 9600 direct ZIBRA and hold, continue climb-in-hold to 9600.

AWOS-3 133.775	SALT LAKE CITY CENTER 125.575 379.275	UNICOM 122.8 (CTAF) 1
-------------------	--	--------------------------



9600

ZIBRA

VGSI and descent angles not coincident  
(VGSI Angle 3.00/TCH 35).

0.8 NM to SUWEG

2.3 NM to SUWEG

3.5 NM to SUWEG

≤ 3.00° TCH 40

0.8 NM to SUWEG

2.3 NM to SUWEG

3.5 NM to SUWEG

≤ 3.00° TCH 40

5900

6280

7100

8000

0.5

0.8

1.5 NM

1.2 NM

2.6 NM

6 NM

CATEGORY	A	B	C	D
LNVA MDA	5420-1 435 (500-1)	5420-1¼ 435 (500-1¼)	5420-3 1215 (1300-3)	NA
CIRCLING	5620-1 635 (700-1)	6200-3 1215 (1300-3)	NA	NA

REIL Rwy 4 and 22 1  
MRL Rwy 4-22 1