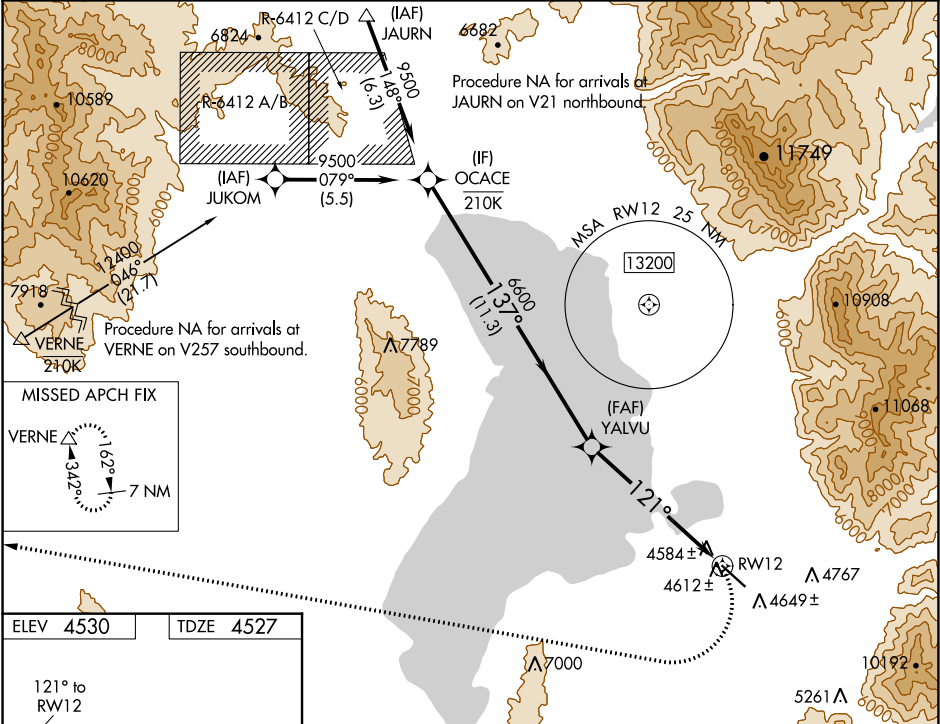


WAAS CH 78042 W12A	APP CRS 121°	Rwy Idg TDZE 4527 Apt Elev 4530
--	------------------------	---

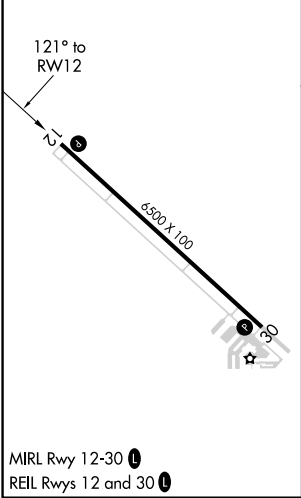
RNAV (GPS) Y RWY 12
SPANISH FORK MUNI/WOODHOUSE FIELD (SPK)

RNP APCH. ▼ NA -21°C	Rwy 12 helicopter visibility reduction below ¾ SM NA. Use Provo altimeter setting; when not received use Nephi altimeter setting: increase all MDAs 120 feet.	MISSED APPROACH: (Do not exceed 185K until turn completion) Climbing right turn to 11500 direct VERNE and hold.
-------------------------------	--	---

AWOS-2 119.275	PVU AWOS-3PT 135.175	SALT LAKE CITY APP CON 118.85 233.7	CTAF 122.9
--------------------------	--------------------------------	---	----------------------



ELEV 4530	TDZE 4527
------------------	------------------



OCACE

Visual Segment - Obstacles.

11500

VERNE

△

9500

137°

6600

121°

RW12

11.3 NM

6.3 NM

CATEGORY	A	B	C	D
LP MDA	6040-1¼ 1513 (1600-1¼)	6040-1½ 1513 (1600-1½)	6040-3	1513 (1600-3)
LNAV MDA	6140-1¼ 1613 (1700-1¼)	6140-1½ 1613 (1700-1½)	6140-3	1613 (1700-3)
CIRCLING	6180-1¼ 1650 (1700-1¼)	6180-1½ 1650 (1700-1½)	6180-3 1650 (1700-3)	NA