

WAAS CH <b>57923</b> <b>W23A</b>	APP CRS <b>235°</b>	Rwy Idg <b>3504</b> TDZE <b>1224</b> Apt Elev <b>1224</b>
--	------------------------	---

RNAV (GPS) RWY 23  
GALION MUNI (GQQ)

<p><b>NA</b></p> <p>Helicopter visibility reduction below <math>\frac{3}{4}</math> SM NA. DME/DME RNP-0.3 NA. Use Mansfield altimeter setting. Circling Rwy 5 NA at night.</p>	<p><b>MISSED APPROACH:</b> Climb to 2900 direct RICKO and hold.</p>
--	---

CLEVELAND APP CON ★	CLNC DEL	UNICOM
124.2 360.65	126.8	122.8 (CTAF) 0

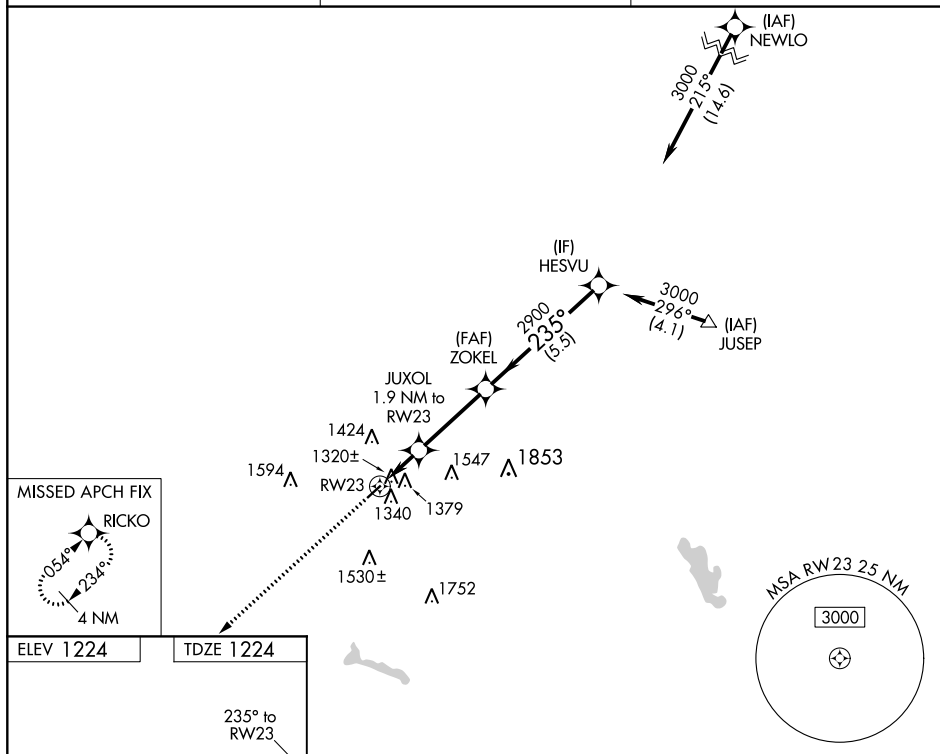


Diagram illustrating the proposed flight path from RICKO to HESVU. The path is divided into segments A, B, C, and D. The total distance is 10.7 NM. The path is a straight line with a 235° heading. The altitude is 2900 feet. The path is labeled '1860' and '1860' at two points. The path is also labeled '3.00° TCH 40'.

CATEGORY	A	B	C	D
LP MDA	1620-1 396 (400-1)		1620-1½ 396 (400-1½)	NA
LNAV MDA	1760-1 536 (600-1)		1760-1½ 536 (600-1½)	NA
CIRCLING	1800-1 576 (600-1)		1800-1½ 576 (600-1½)	NA