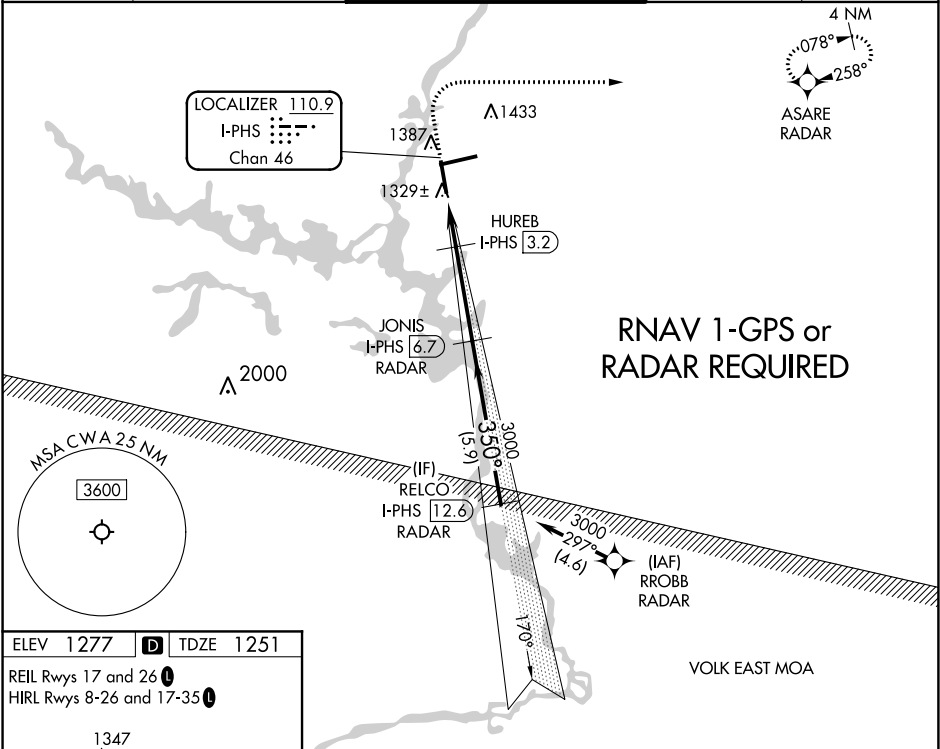


LOC/DME I-PHS <b>110.9</b> Chan <b>46</b>	APP CRS <b>350°</b>	Rwy Idg TDZE <b>1251</b> Apt Elev <b>1277</b>	ILS or LOC RWY 35 CENTRAL WISCONSIN(CWA)	
-------------------------------------------------	------------------------	-----------------------------------------------------	---------------------------------------------	--

DME required. RNAV 1-GPS or RADAR required.		MALSR 	MISSED APPROACH: Climb to 1700 then climbing right turn to 3000 direct ASARE/RADAR and hold.	
ATIS <b>127.45</b>	MINNEAPOLIS CENTER <b>124.4 317.7</b>	CWA TOWER ★ <b>119.75 (CTAF) 360.7</b>	GND CON <b>121.9 360.7</b>	UNICOM <b>122.95</b>



<p>Diagram of Runway 35 approach. Key features include: - Runway 35: 6501 x 150 ft, 0.8% UP. - ASARE RADAR: 1700 ft, 3000 ft. - JONIS I-PHS: 6.7, 3000 ft. - RELCO I-PHS: 12.6, 3000 ft. - HUREB I-PHS: 2.1, 3.2, 1900 ft. - Distances: 0.9 NM, 1.1 NM, 3.4 NM, 5.9 NM. - Altitudes: 1700 ft, 3000 ft, 1900 ft, 1451 ft, 200 ft, 1560 ft, 309 ft, 1740 ft, 463 ft, 1840 ft, 563 ft. - Bearings: 350° 5.4 NM from FAF, 350° 3500 ft, 350° 3000 ft, 350° 3000 ft, 350° 3000 ft, 350° 3000 ft, 350° 3000 ft, 350° 3000 ft, 350° 3000 ft, 350° 3000 ft, 350° 3000 ft, 350° 3000 ft, 350° 3000 ft, 350° 3000 ft.</p>	1700	3000	ASARE RADAR	JONIS I-PHS <u>6.7</u> RADAR	RELCO I-PHS <u>12.6</u> RADAR	
	*LOC only	*I-PHS <u>2.1</u>	*I-PHS <u>3.2</u>	HUREB	3000	350°
	I-PHS <u>1.2</u>				3000	3000
						GS 3.00° TCH 50
		0.9 NM	1.1 NM	3.4 NM	5.9 NM	
	CATEGORY	A	B	C	D	
	S-ILS 35	1451-½		200 (200-½)		
	S-LOC 35	1560-½		309 (300-½)		
	<b>C</b> CIRCLING	1740-1 463 (500-1)		1740-1½ 463 (500-1½)		1840-2 563 (600-2)