

WAAS CH <b>86428</b> <b>W21A</b>	APP CRS <b>211°</b>	Rwy Idg <b>5003</b> TDZE <b>470</b> Apt Elev <b>473</b>
--	------------------------	---

RNAV (GPS) RWY 21  
FLORA MUNI (F.O.A.)

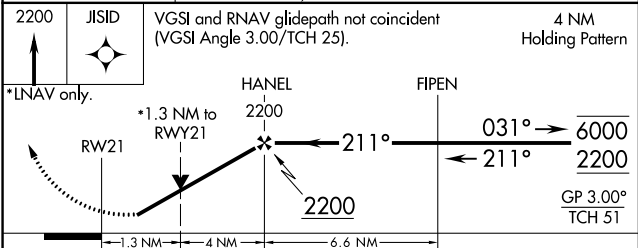
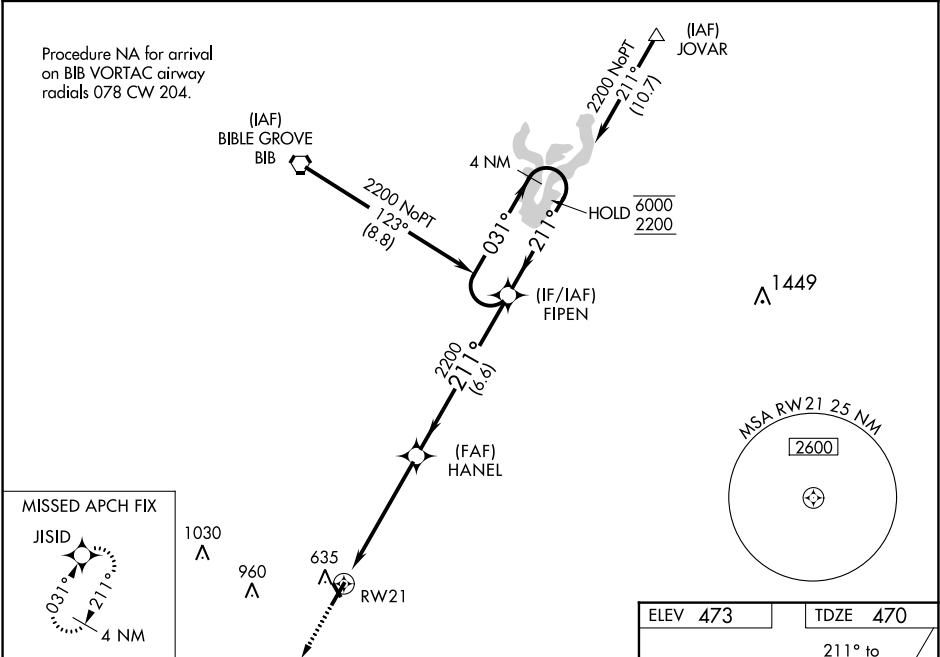
RNP APCH.

▼ Circling NA to Rwy's 15 and 33. Baro-VNAV and VDP NA when using Olney-Noble altimeter setting.

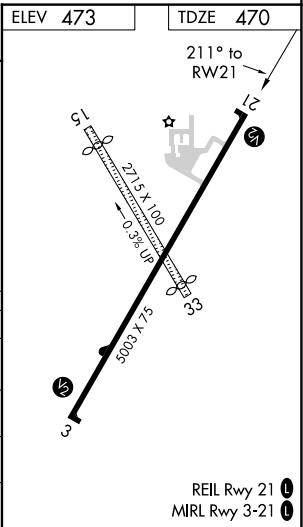
⚠ For uncompensated Baro-VNAV systems, LNAV/VNAV NA below -17°C or above 54°C. Rwy 21 helicopter visibility reduction below ¼ SM NA. When local altimeter setting not received, use Olney-Noble altimeter setting and increase LPV DA to 779 feet, LNAV/VNAV DA to 838 feet and LNAV/VNAV visibilities ½ SM; increase all MDAs 40 feet and Circling Cat C visibility ¼ SM.

MISSED APPROACH:  
Climb to 2200 direct JISID and hold.

AWOS-3 <b>120.175</b>	KANSAS CITY CENTER <b>127.7 351.825</b>	UNICOM <b>122.7 (CTAF) 0</b>
--------------------------	--	---------------------------------



CATEGORY	A	B	C	D
LPV DA	746-1	276 (300-1)		NA
LNAV/VNAV DA	805-1	335 (400-1)		NA
LNAV MDA	920-1	450 (500-1)	920-1 3/8 450 (500-1 3/8)	NA
CIRCLING	940-1	467 (500-1)	1120-1 3/4 647 (700-1 3/4)	NA



EC-3, 03 DEC 2020 to 31 DEC 2020

EC-3, 03 DEC 2020 to 31 DEC 2020