

PATUXENT RIVER, MARYLAND

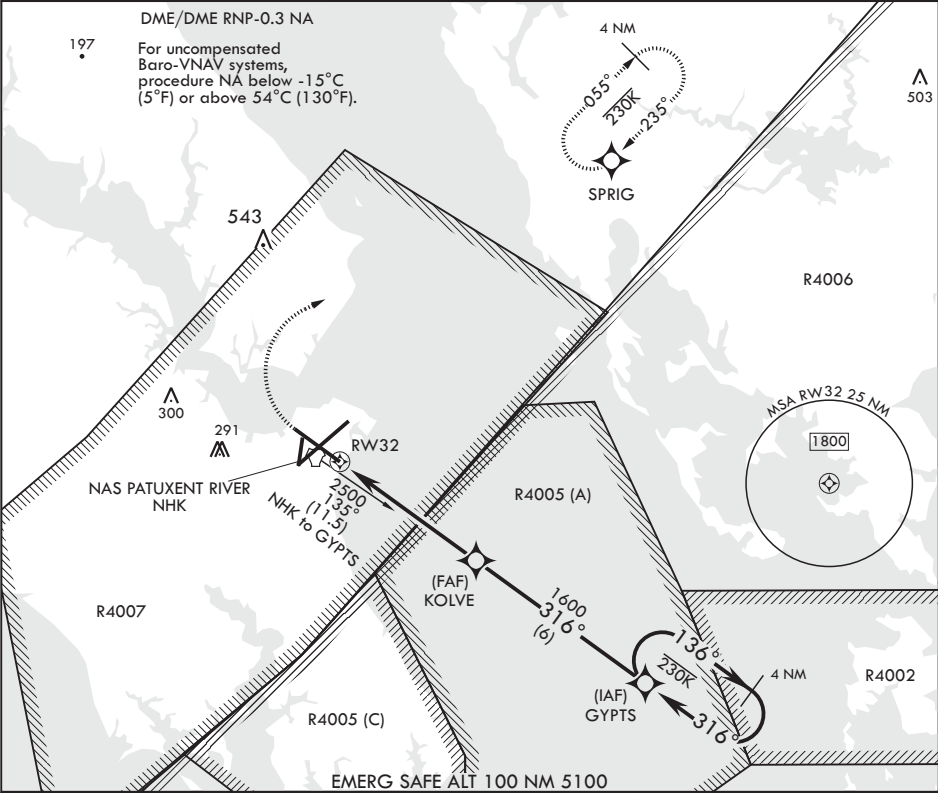
RNAV (GPS) RWY 32

APCH CRS	Rwy Idg	9732
316°	TDZE	18
	Arprt Elev	39

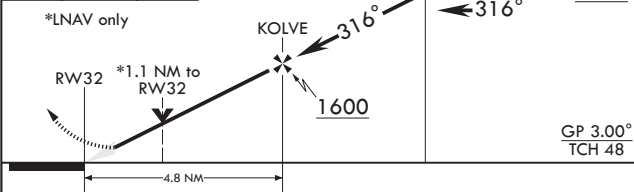
AL-314 (USN) PATUXENT RIVER NAS (TRAPNELL FLD) (KNHK)

MISSED APPROACH: Climb to 600, then climbing right turn to 2500 direct SPRIG and hold.

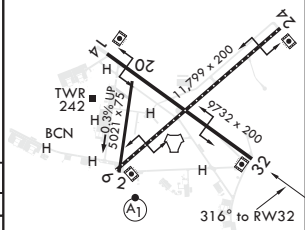
ATIS 322.425	APP CON/DEP CON 121.0 250.3	TOWER 123.7 343.65	GND CON 120.6 336.4	CLNC DEL 135.2 316.125	ASR/PAR
-----------------	--------------------------------	-----------------------	------------------------	---------------------------	---------



600	2500	SPRIG	ELEV 39	TDZE 18
-----	------	-------	---------	---------



CATEGORY	A	B	C	D
LNAV/VNAV DA	298-7/8 280 (300-7/8)	309-7/8 291 (300-7/8)	317-7/8 299 (300-7/8)	328-7/8 310 (300-7/8)
LNAV MDA	420-1 402 (400-1)	420-1 402 (400-1)	420-1 402 (400-1)	420-1 402 (400-1)
CIRCLING	560-1 521 (600-1)	600-1 561 (600-1)	620-1 1/2 581 (600-1 1/2)	660-2 621 (700-2)



PATUXENT RIVER, MARYLAND

38°17'N - 76°25'W PATUXENT RIVER NAS (TRAPNELL FLD) (KNHK)

Amndt 2 10SEP20

RNAV (GPS) RWY 32

NE-3, 03 DEC 2020 to 31 DEC 2020

NE-3, 03 DEC 2020 to 31 DEC 2020