

| | | |
|--|------------------------|---|
| WAAS CH 86525 W32A | APP CRS 321° | Rwy Idg TDZE 996 Apt Elev 998 |
|--|------------------------|---|

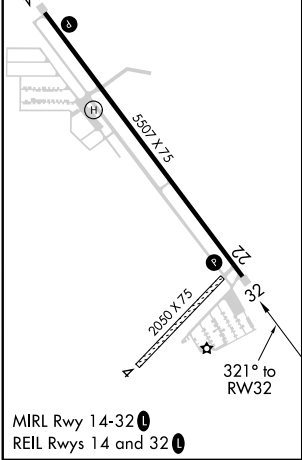
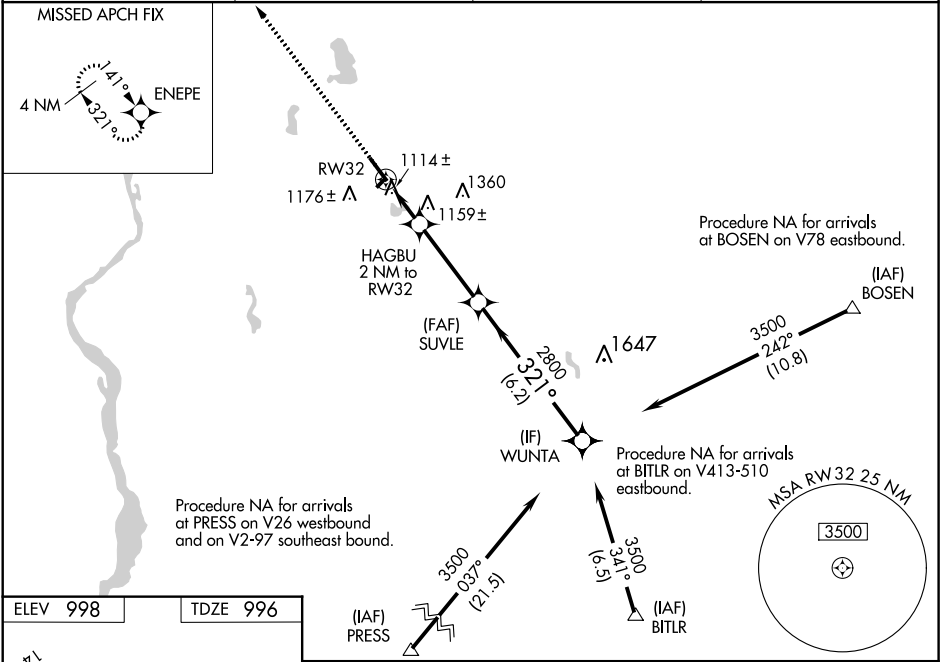
RNAV (GPS) RWY 32
NEW RICHMOND RGNL (R.NH)

RNP APCH.

⚠ Baro-VNAV NA when using Osceola altimeter setting. For uncompensated Baro-VNAV systems, LNAV/VNAV NA below -16°C (4°F) or above 37°C (98°F). Rwy 32 helicopter visibility reduction below ¾ SM NA. When local altimeter setting not received, use Osceola altimeter setting and increase all DA/MDA 40 feet; increase LNAV visibility Cats C and D ½ SM and Circling Cats C and D ¼ SM. Circling to Rwy 4, 22 NA.

MISSED APPROACH:
Climb to 3500 direct ENEPE and hold.

| | | | |
|------------------------|--|-----------------------|-----------------------------------|
| AWOS-3 120.0 | MINNEAPOLIS APP CON 121.2 335.65 | GCO 121.725 | UNICOM 122.975 (CTAF) 0 |
|------------------------|--|-----------------------|-----------------------------------|



3500

↑

ENEPE

VGSI and RNAV glidepath not coincident (VGSI Angle 3.00/TCH 20).

*LNAV only.

WUNTA

3500

GP 3.00°

TCH 50

SUVLE

2800

2800

↙

HAGBU

2 NM to RW32

*1680

↙

↙

RW32

2 NM

3.5 NM

6.2 NM

321°

| | | | | |
|--------------|--------|-------------|-------------------------|-----------------------|
| CATEGORY | A | B | C | D |
| LPV DA | 1246-1 | | 250 (300-1) | |
| LNAV/VNAV DA | 1295-1 | | 299 (300-1) | |
| LNAV MDA | 1420-1 | 424 (500-1) | 1420-1¼ | 424 (500-1¼) |
| CIRCLING | 1540-1 | 542 (600-1) | 1660-1¾ 662 (700-1¾) | 1660-2 662 (700-2) |

EC-3, 31 DEC 2020 to 28 JAN 2021

EC-3, 31 DEC 2020 to 28 JAN 2021